



GRABO



Commercial

VINYL FLOORINGS AND WALL COVERINGS

2021

Commercial

VINYL FLOORINGS AND WALL COVERINGS

HOMOGENEOUS FLOOR COVERINGS 8

Fortis	10
Fortis Wild	14
Triumph	16
Polis	18
Conducto S	20

HETEROGENEOUS COMMERCIAL FLOOR COVERINGS 22

Silver Knight	24
Diamond	28
Acoustic	32
Safety	46
Standart	54

HETEROGENEOUS LIGHT-COMMERCIAL FLOOR COVERINGS 64

Aura	66
Top	68
Astral	72
SoundTex	76

LVT 78

Domino 2.0, PlankIT, Ideal, Robust	80
------------------------------------	----

SPC 90

Domino SPC, PlankIT SPC	92
-------------------------	----

WALL COVERINGS 96

Muravyl	98
Silver Knight Wall	100

Accessories	102
Grabo's recommendation	104
References	106
Application guide	110

GRABO

Commercial

VINYL FLOORINGS AND WALL COVERINGS

Welcome in our Commercial catalogue, your guide to our products and services.

You can find all about our heterogeneous and homogeneous floor and wall covering products recommended for commercial and light-commercial applications.

WHY GRABO?

> TRADITION

Graboplast Ltd is one of the biggest independent floor covering manufacturer company with over 115 years of experience.

> FLEXIBILITY

The key factor of this long-term success is the ability to develop the products that would meet the always changing market requirements.

> INNOVATION

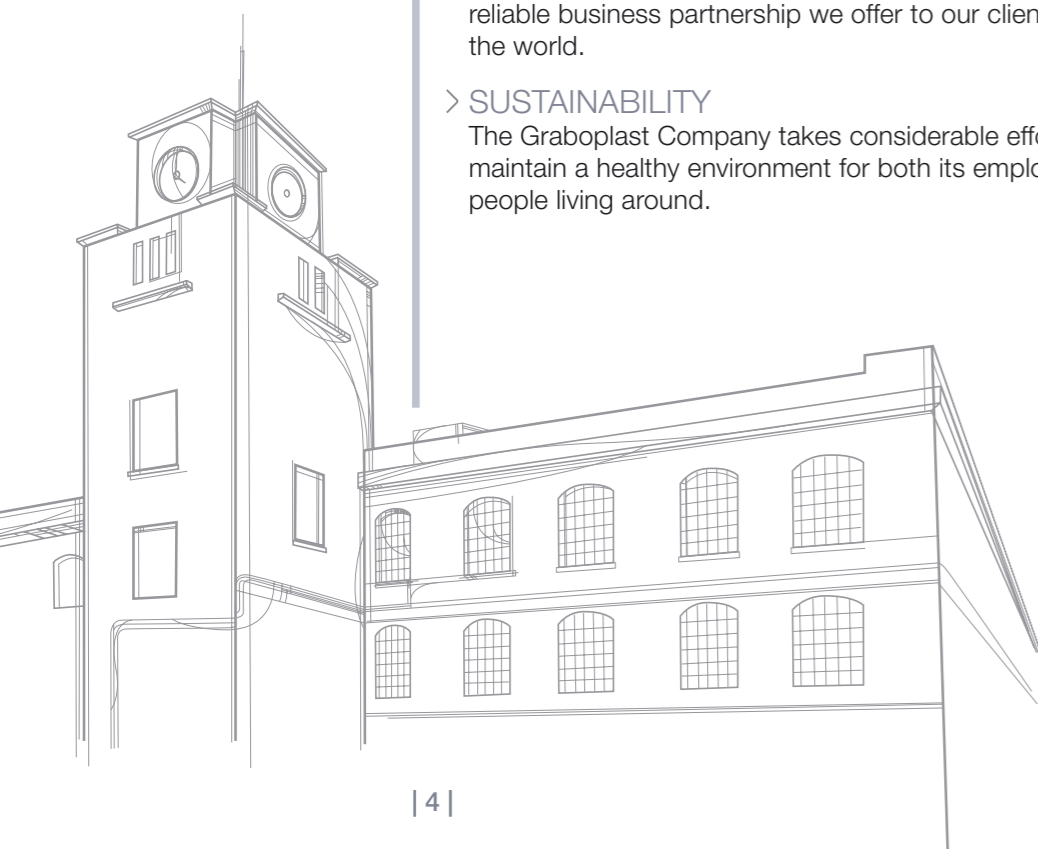
Our production is based exclusively on our own technologies and unique production processes developed and improved continuously by our R&D.

> QUALITY

The life-long commitment to quality is the basis of stable and reliable business partnership we offer to our clients all around the world.

> SUSTAINABILITY

The Graboplast Company takes considerable efforts to maintain a healthy environment for both its employees and people living around.



Global presence

More than 80 countries
and 650 partners



Environmental attributes of Grabo vinyl floorings



PHTHALATE FREE TECHNOLOGY

Grabo floorings contain biologically inert plasticizer which can be used in sensitive areas as well, such as medical devices and children toys. Thanks to the eco-friendly formulations our products have low volatile organic compounds (low VOC), therefore they do not adversely affect the indoor air quality.

100% RECYCLABLE

Beside the carefully selected raw materials and the environment-friendly manufacturing solutions we pay attention to the fact that our products do not impact the environment at the end of their life-cycle either. Accordingly our floorings are 100% recyclable.

NO WASTE PRODUCT

It is important to know that we not only declare that our products can be 100% recycled but we ourselves can convert the production waste and post-consumer waste into valuable raw materials which are incorporated into our floor production.

NO HARMFUL MATERIALS

Grabo floorings are metal and solvent free resulting in reduced global environmental pollution.

NO WAX

Grabo floorings have reduced cleaning requirements. Environmental impact is lessened by: no energy needs for waxing, reduced energy needs for cleaning, reduced cleaning agent use, reduced water use, and reduced wastewater generation.



What is...?



X-PUR

Grabo's new surface treatment combines state-of-the-art technology with a customized, special lacquer formula. This results in excellent chemical resistance and very easy cleaning of our commercial floors, or outstanding scuff resistance of our sports floor products.



SILVER KNIGHT

Grabo Silver Knight eliminates harmful bacteria without the use of chemicals. It has a self-disinfecting surface reached by a unique double-defense-line.



iGUARD PUR SURFACE

UV cured, cross linked Polyurethane reinforcement which ensures easy cleaning and durability. No additional surface treatment needed for the whole lifetime of the product.



TECH SURFACE

Extreme durability due to PUR and micronized Al_2O_3 particles TECH Surface is a revolutionary new technology which makes the surface not only extremely hard and wear resistant but flexible so the installation can be carried out easily and quickly. The benefits of TECH Surface technology are the excellent stain and chemical resistance, the abrasion resistance and the easy maintenance.



EASY CARE

Easy Care PUR makes the product easy to clean, whilst at the same time ensuring the safety properties and other technical performance benefits remain for a very long time.



CLP SYSTEM

CLP is a complex system built up of PVC and cross linked polymer. Its essentiality is, on one hand - against other technical solutions - that CLP ensures throughout the intensive usage the constant parameters not only on the surface, but in the cross section of the wear layer: the durability of the product increases, which involves that the degree of wear and tear decreases. On the other hand due to the high density of the cross links, CLP diminishes the adhesion of the contamination on the surface, substantially improving the cleanability of the flooring.



GRABOSAN

No surface is more at risk of contamination than the floor. In healthcare one of the most important steps in reducing the spread of infectious diseases is the cleaning and sanitizing of surfaces. Routine cleaning with detergent and water is useful for removing visible dirt and germs, but floor coverings require an additional performance to reduce the number of germs.

Therefore Grabo invented graboSAN, the anti-microbe additive contained surface treatment against mold, fungi, yeast, algae and bacteria. The result of the test method given in the International Standard ISO 846:1997 certify that no significant microbe growth could be observed on the graboSAN surface treated floors. The tests have been carried out with the *Pseudomonas aeruginosa* bacterium, which is one of the most common pathogens involved in hospital infections causing pneumonia, and with *Aspergillus niger* fungus, which causes a disease called black mold on certain fruits and vegetables.

Homogeneous

commercial floor coverings

- > FORTIS
- > FORTIS WILD
- > TRIUMPH
- > POLIS
- > CONDUCTO S



HOMOGENEOUS

GRABO
Fortis

HIGH PERFORMANCE, NON-DIRECTIONAL
HOMOGENEOUS FLOOR COVERING

PERFORMANCE, FEATURES & BENEFITS

Excellent abrasion resistance | Unique non-directional design
Low residual indentation | Easy cleaning and maintenance thanks
to iGuard PUR Surface | Anti-bacterial | Antistatic

BEST
DIMENSIONAL
STABILITY
ON THE
MARKET

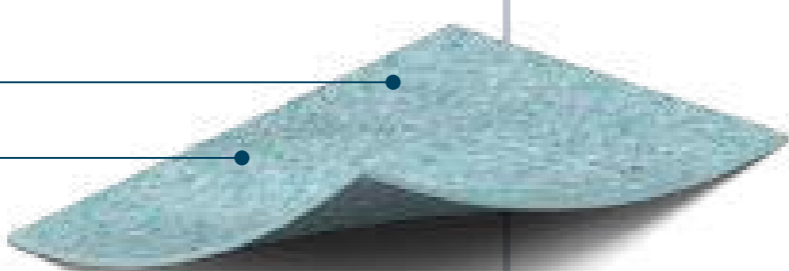
**RECOMMENDED
USAGE**

- > Healthcare
- > Education
- > Offices
- > Other public areas

CONSTRUCTION

iGuard PUR Surface

Non-directional
homogeneous layer



SPECIFICATIONS

DESCRIPTION

Construction	homogeneous	
Binder content	EN ISO 10581	Type I.
Total thickness	EN ISO 24346	2.0 mm
Wear layer thickness	EN ISO 24340	2.0 mm
Width of roll	EN ISO 24341	2 m
Length of roll	EN ISO 24341	20 lm
Total weight	EN ISO 23997	2,8 kg/m ²

CLASSIFICATION

European classification	EN 685	class: 34/43
-------------------------	--------	--------------

PERFORMANCE

Abrasion group	EN 660-1	T
Residual indentation	EN ISO 24343	max. 0.1 mm
Dimensional stability	EN ISO 23999	max. 0.2 %
	EN ISO 23999	average 0.1 %
Fire resistance	EN 13501-1	class: Bfl-s1
Slip resistance	EN 13893	class: DS
Electrical resistance	EN 1815	< 2 kV
Chemical resistance	EN ISO 26987	✓
Light fastness	EN 20105 B02	grade 6
Castor chair resistance	EN ISO 4918	✓
Hygiene	bacterial resistant	
Seaming method	hot or cold welding	
Warranty	10 year	



2.0
mm

TOTAL THICKNESS

2.8
kg/m²

TOTAL WEIGHT

average
0.1
%

DIMENSIONAL STABILITY

34 43

EUROPEAN
CLASSIFICATION



HOMOGENEOUS

Fortis



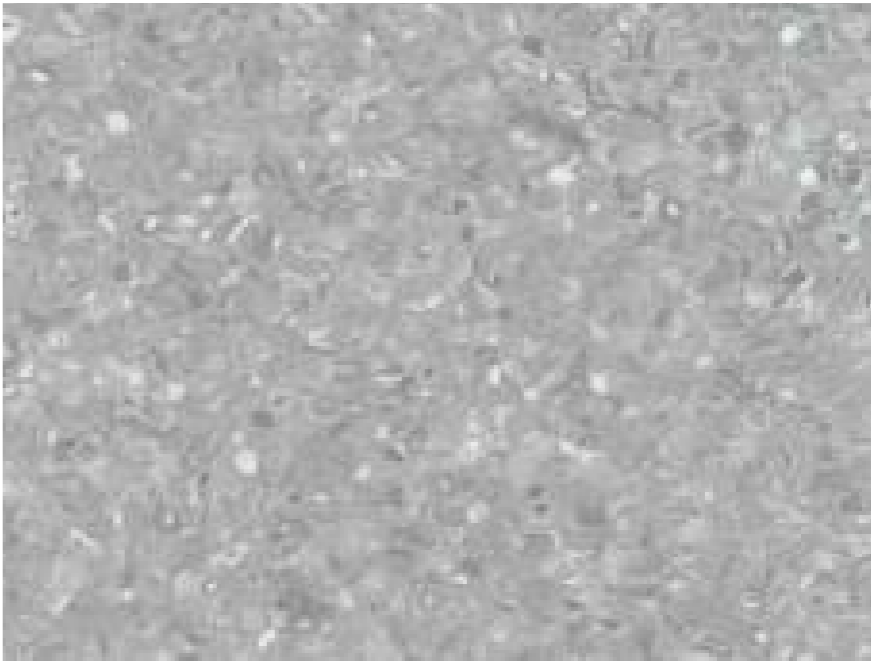
SAND



TOBACCO



BONE



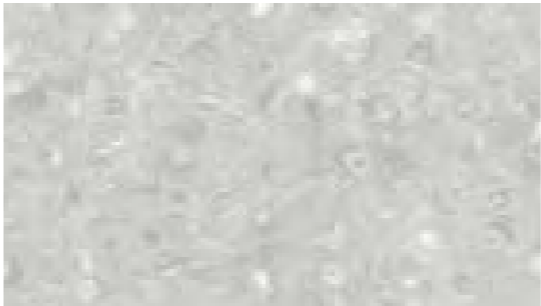
STEEL



CARAMEL



KORK



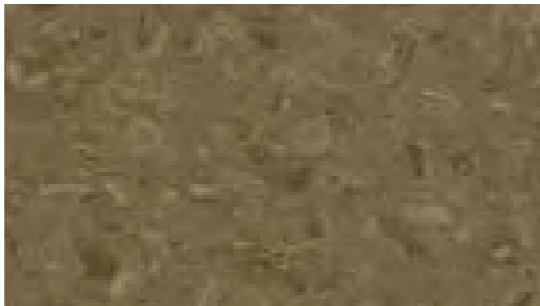
FOG



AQUA



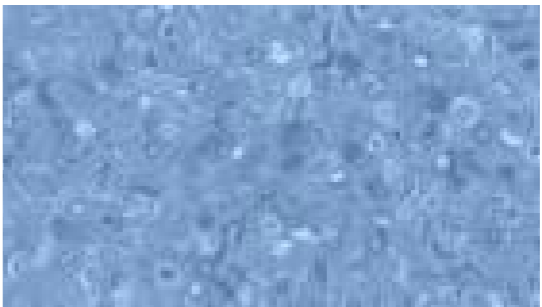
SILVER



MOCCA



ANTHRACITE



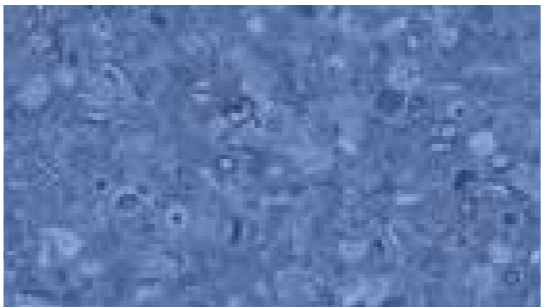
COBALT



CANARI



GOLD



INDIGO



CACTUS



CORAL



ORANGE



KIWI

HOMOGENEOUS

GRABO

Fortis Wild

HIGH PERFORMANCE, NON-DIRECTIONAL
HOMOGENEOUS FLOOR COVERING

PERFORMANCE, FEATURES & BENEFITS

Excellent abrasion resistance | Exciting vivid colors
Low residual indentation | Easy cleaning and maintenance thanks
to iGuard PUR Surface | Anti-bacterial | Antistatic

BEST
DIMENSIONAL
STABILITY
ON THE
MARKET

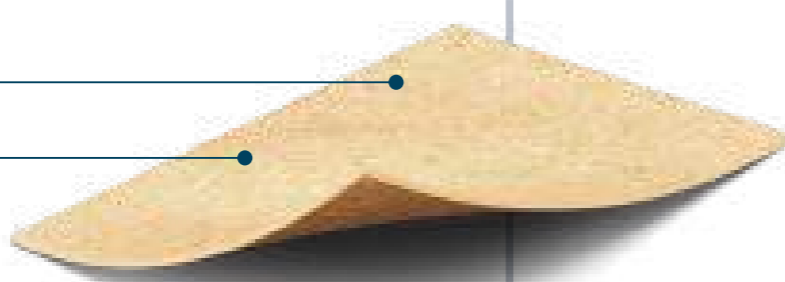
RECOMMENDED
USAGE

- > Healthcare
- > Education
- > Offices
- > Other public areas

CONSTRUCTION

iGuard PUR Surface

Non-directional
homogeneous layer



SPECIFICATIONS

DESCRIPTION

Construction	homogeneous	
Binder content	EN ISO 10581	Type I.
Total thickness	EN ISO 24346	2.0 mm
Wear layer thickness	EN ISO 24340	2.0 mm
Width of roll	EN ISO 24341	2 m
Length of roll	EN ISO 24341	20 lm
Total weight	EN ISO 23997	2,8 kg/m ²

CLASSIFICATION

European classification	EN 685	class: 34/43
-------------------------	--------	--------------

PERFORMANCE

Abrasion group	EN 660-1	T
Residual indentation	EN ISO 24343	max. 0.1 mm
Dimensional stability	EN ISO 23999	max. 0.2 %
	EN ISO 23999	average 0.1 %
Fire resistance	EN 13501-1	class: Bfl-s1
Slip resistance	EN 13893	class: DS
Electrical resistance	EN 1815	< 2 kV
Chemical resistance	EN ISO 26987	✓
Light fastness	EN 20105 B02	grade 6
Castor chair resistance	EN ISO 4918	✓
Hygiene		bacterial resistant
Seaming method		hot or cold welding
Warranty		10 year



2.0
mm

TOTAL THICKNESS

2.8
kg/m²

TOTAL WEIGHT

average
0.1
%

DIMENSIONAL STABILITY

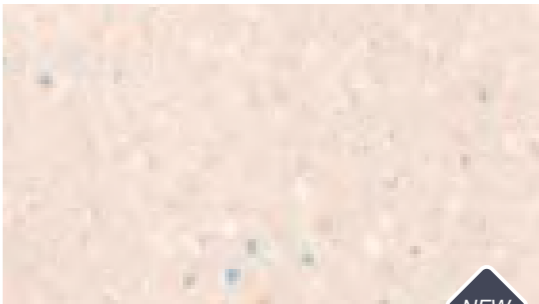
34 43

EUROPEAN
CLASSIFICATION



LION

NEW



LIZARD

NEW



DOVE

NEW



PARROT

NEW



IGUANA

NEW



HOMOGENEOUS

GRABO
Triumph

HIGHLY DURABLE HOMOGENEOUS MULTIPURPOSE FLOORING

PERFORMANCE, FEATURES & BENEFITS

Non-directional design | Ease of cleaning due to iGUARD Surface treatment | Good chemical protection | Bacterial resistant surface
Flexible structure for easy installation

BEST
DIMENSIONAL
STABILITY
ON THE
MARKET

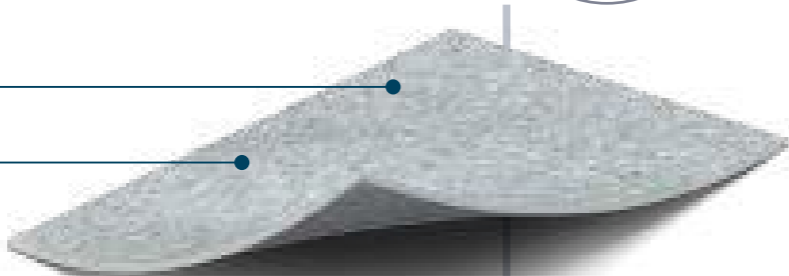
RECOMMENDED
USAGE

- > Healthcare
- > Education
- > Offices
- > Other public areas

CONSTRUCTION

iGuard PUR Surface

Non-directional
homogeneous layer



SPECIFICATIONS

DESCRIPTION

Construction	homogeneous	
Binder content	EN ISO 10581	Type I.
Total thickness	EN ISO 24346	2.0 mm
Wear layer thickness	EN ISO 24340	2.0 mm
Width of roll	EN ISO 24341	2 m
Length of roll	EN ISO 24341	25 lm
Total weight	EN ISO 23997	2,9 kg/m²

CLASSIFICATION

European classification	EN 685	class: 34/43
-------------------------	--------	--------------

PERFORMANCE

Abrasion group	EN 660-1	T
Residual indentation	EN ISO 24343	max. 0.1 mm
Dimensional stability	EN ISO 23999	max. 0.2 %
	EN ISO 23999	average 0.1 %
Fire resistance	EN 13501-1	class: Bfl-s1
Slip resistance	EN 13893	class: DS
Electrical resistance	EN 1815	< 2 kV
Chemical resistance	EN ISO 26987	✓
Light fastness	EN 20105 B02	grade 6
Thermal resistance	EN 12524	0.012 m2K/W
Castor chair resistance	EN ISO 4918	✓
Content of PCP	EN 12673	Does not contain
Formaldehyde emission	ENV 717-1	E1 (no emission)
Hygiene		bacterial resistant
Seaming method		heat or cold weld
Warranty		10 year



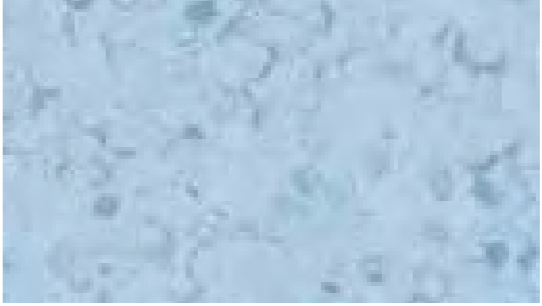
QUARTZ



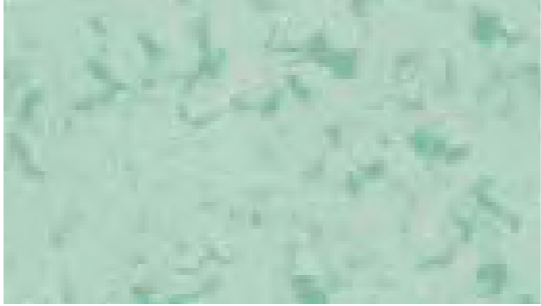
ASH



AZURE



OPAL



MINT



IVORY



VANILLA



HONEY



2.0
mm

TOTAL THICKNESS

2.9
kg/m²

TOTAL WEIGHT

average
0.1
%

DIMENSIONAL STABILITY

34 43

EUROPEAN
CLASSIFICATION

HOMOGENEOUS

GRABO Polis

COST EFFECTIVE MULTIPURPOSE
HOMOGENEOUS FLOORING

PERFORMANCE, FEATURES & BENEFITS

Non-directional design | Ease of cleaning due to iGUARD Surface treatment | Good chemical protection | Bacterial resistant surface
Flexible structure for easy installation

BEST
DIMENSIONAL
STABILITY
ON THE
MARKET

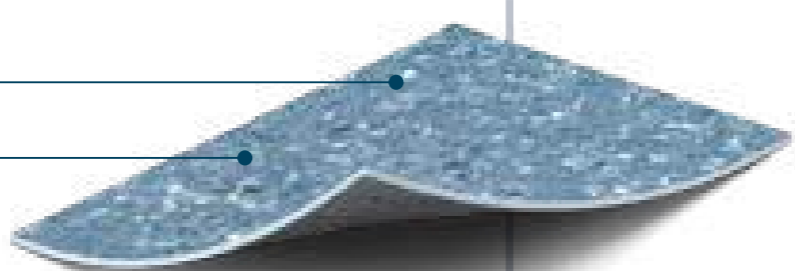
RECOMMENDED USAGE

- > Healthcare
- > Education
- > Offices
- > Other public areas

CONSTRUCTION

iGuard PUR Surface

Non-directional
homogeneous layer



SPECIFICATIONS

DESCRIPTION

Construction	homogeneous	
Binder content	EN ISO 10581	Type I.
Total thickness	EN ISO 24346	2.0 mm
Wear layer thickness	EN ISO 24340	2.0 mm
Width of roll	EN ISO 24341	2 m
Length of roll	EN ISO 24341	20 lm
Total weight	EN ISO 23997	2,8 kg/m²

CLASSIFICATION

European classification	EN 685	class: 34/43
-------------------------	--------	--------------

PERFORMANCE

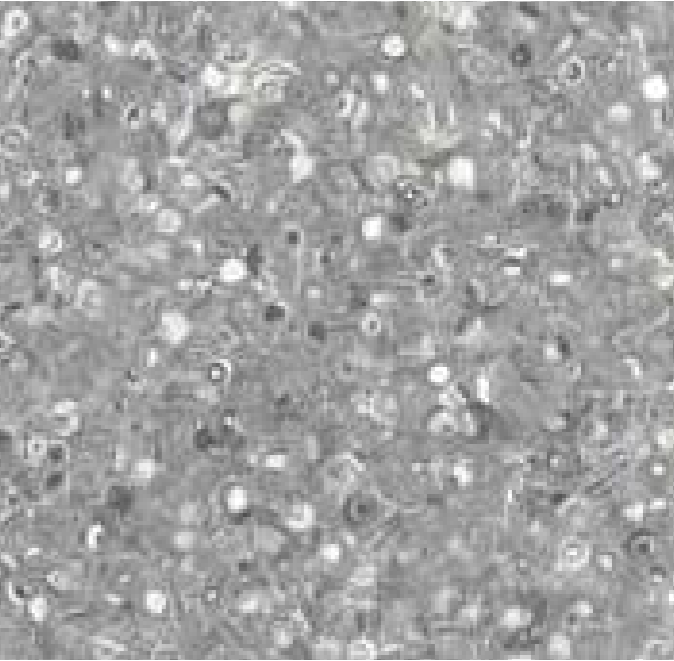
Residual indentation	EN ISO 24343	max. 0.1 mm
Dimensional stability	EN ISO 23999	max. 0.2 %
	EN ISO 23999	average. 0.1 %
Fire resistance	EN 13501-1	class: Bfl-s1
Slip resistance	EN 13893	class: DS
Electrical resistance	EN 1815	< 2 kV
Chemical resistance	EN ISO 26987	✓
Light fastness	EN 20105 B02	grade 6
Thermal resistance	EN 12524	0.012 m2K/W
Castor chair resistance	EN ISO 4918	✓
Content of PCP	EN 12673	Does not contain
Formaldehyde emission	ENV 717-1	E1 (no emission)
Hygiene		bacterial resistant
Seaming method		heat or cold weld
Warranty		10 year



SHELL



KOALA



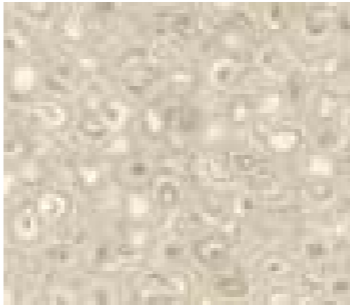
BAZALT



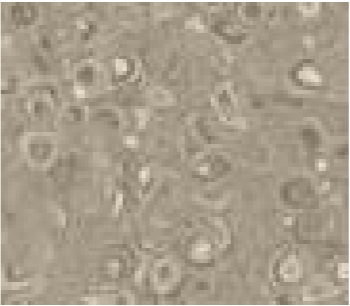
CREME



BLONDE



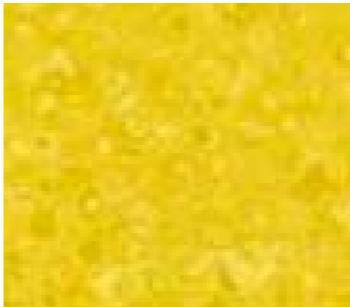
ALMOND



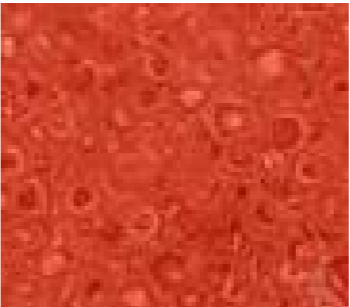
MELANGE



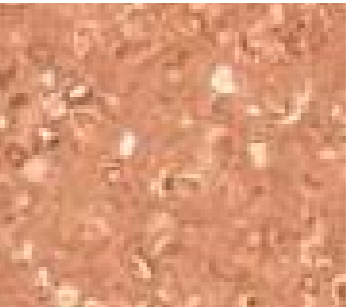
CAMEL



SUN



RUBY



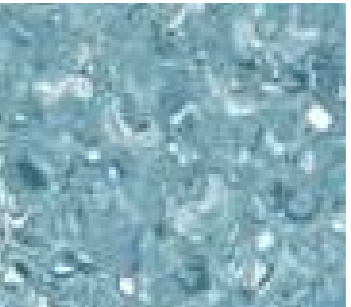
CLAY



EMERALD



WATER



SKY



2.0
mm

TOTAL THICKNESS

2.8
kg/m²

TOTAL WEIGHT

average
0.1
%

DIMENSIONAL STABILITY

34 43

EUROPEAN
CLASSIFICATION

GRABO

Conducto S

HIGH PERFORMANCE, HOMOGENEOUS FLOOR COVERING WITH ELECTROSTATIC CONDUCTIVE PROPERTIES

RECOMMENDED
USAGE

- > Operating rooms in hospitals
- > X-ray departments
- > Laboratories
- > Computer rooms
- > Electronics manufacturing

2.0
mm

TOTAL THICKNESS

2.8
kg/m²

TOTAL WEIGHT

2
m

WIDTH OF ROLLS

34 43

EUROPEAN
CLASSIFICATION

PERFORMANCE, FEATURES & BENEFITS

Guarantees the lasting elimination of electrostatic charges, Due to the highest (group T) wear resistance, Grabo Conducto is a long-term solution. Hinder the aggregation of dust.

CONSTRUCTION

Non-directional
homogeneous layer



SPECIFICATIONS

DESCRIPTION

Construction	homogeneous	
Binder content	EN ISO 10581	Type I.
Total thickness	EN ISO 24346	2.0 mm
Wear layer thickness	EN ISO 24340	2.0 mm
Width of roll	EN ISO 24341	2 m
Length of roll	EN ISO 24341	20 lm
Total weight	EN ISO 23997	2,8 kg/m ²

CLASSIFICATION

European classification	EN 685	class: 34/43
-------------------------	--------	--------------

PERFORMANCE

Abrasion group	EN 660-1	T
Residual indentation	EN ISO 24343	max. 0.1 mm
Dimensional stability	EN ISO 23999	≤ 0.4 %
Fire resistance	EN 13501-1	class: Bfl-s1
Slip resistance	EN 13893	class: DS
Electrical resistance	EN 1815	< 2 kV
	EN 1081	R _s ≤ 1 × 10 ⁹ Ω
Chemical resistance	EN ISO 26987	✓
Light fastness	EN 20105 B02	grade 6
Castor chair resistance	EN ISO 4918	✓
Bacteria and fungi resistance	EN ISO 846:1999	does not favour growth
Warranty		10 year

ESD
PROTECTION

GROUP
T
WEAR
RESISTANCE

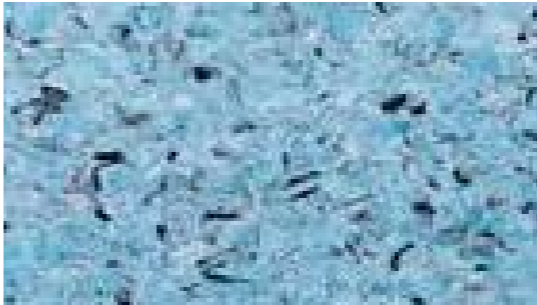
FLOOR
HEATING

NOI
WAX

grabo
SAN
minimize
the growth of
microorganisms



BEACH



LAGOON



COAST



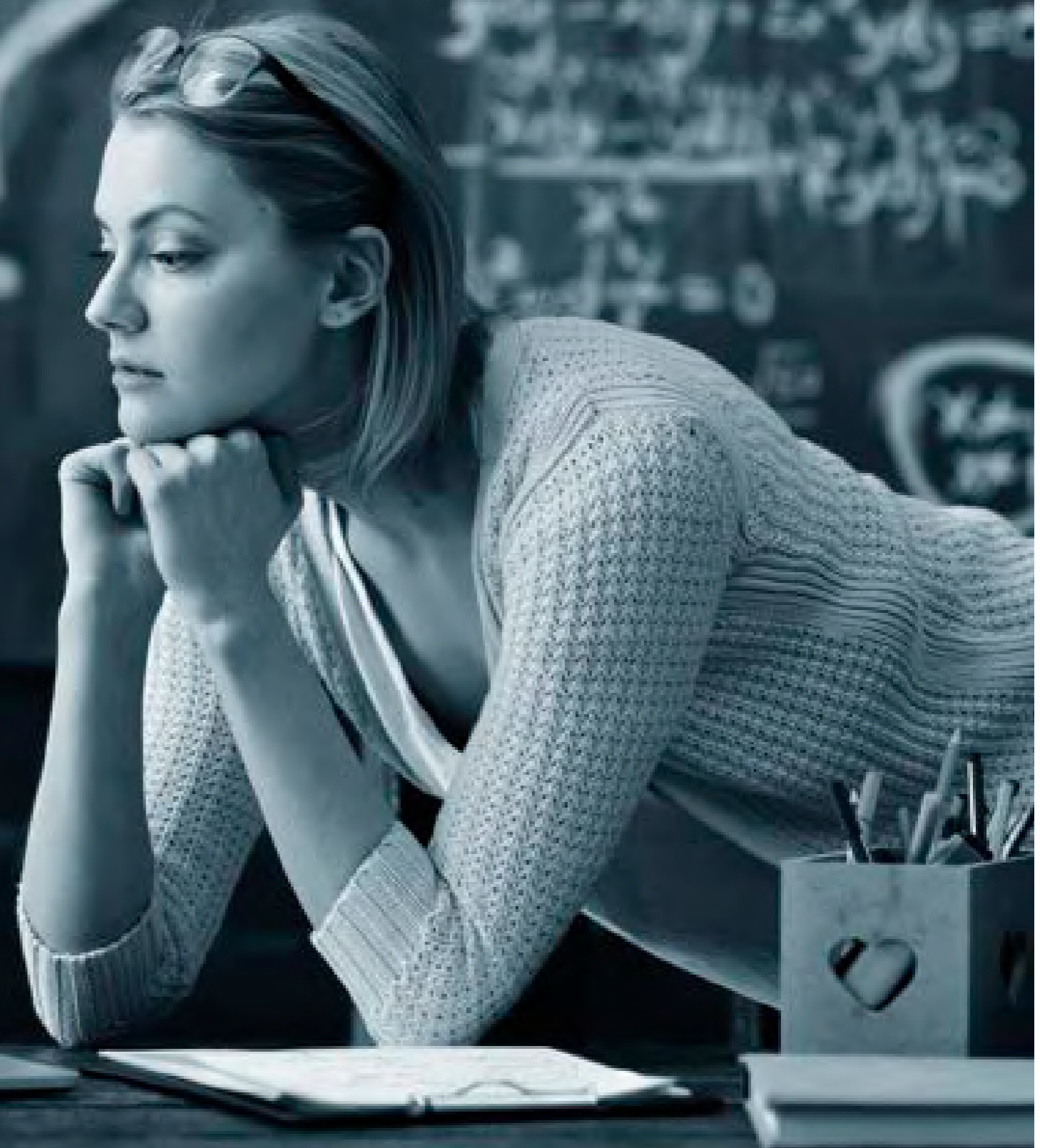
SAND



Heterogeneous

commercial sheet floor coverings

- SILVER KNIGHT
- DIAMOND
- ACOUSTIC 43
- ACOUSTIC PRO
- GRABOSAFE
SILVER KNIGHT
- GRABOSAFE 20JSK
- ECOSAFE
- STANDART



HETEROGENEOUS

GRABO

Silver Knight

THE MOST HYGENICAL VINYL SHEET FLOORING

PERFORMANCE, FEATURES & BENEFITS

Thanks to the unique self-disinfecting surface, Grabo Silver Knight eliminates harmful bacteria and viruses without the use of chemicals.

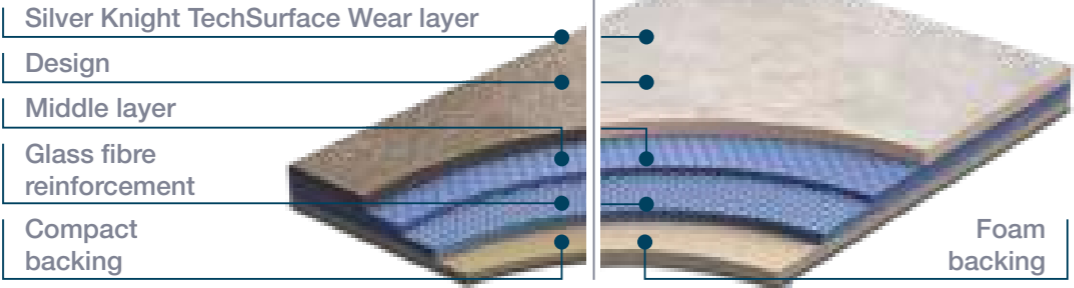
RECOMMENDED USAGE

- > Healthcare
- > Education
- > Hospitality
- > Offices
- > Retail

CONSTRUCTION

DIAMOND TECH

ACOUSTIC 7



DESCRIPTION		Silver Knight Diamond Tech	Silver Knight Acoustic 7
Construction		compact heterogeneous	heterogeneous
Total thickness	EN ISO 24346	2,0 mm	3,2 mm
Wear layer thickness	EN ISO 24340	0,7 mm	0,7 mm
Width of roll	EN ISO 24341	2 m	2 m
Length of roll	EN ISO 24341	20 lm	20 lm
Total weight	EN ISO 23997	2,8 kg/m²	2,6 kg/m²
CLASSIFICATION			
European classification	EN 685	class: 34/43	class: 34/42
PERFORMANCE			
Abrasion group	EN 660-1	T	T
Residual indentation	EN ISO 24343	max. 0,1 mm	max. 0,2 mm
Dimensional stability	EN ISO 23999	max. 0,2 %	max. 0,2 %
Fire resistance	EN 13501-1	class: Bfl-s1	class: Bfl-s1
	ASTM E 648/ 662	class: Class1	-
	Gost 30402-94	G1	G1
Impact sound reduction	EN ISO 717-2	-	ΔL _w =19 dB
Slip resistance	DIN 51130	R9	R9
Electrical resistance	EN 1815	< 2 kV	< 2 kV
	EN 1081	≤ 10 ⁹ Ω	≤ 10 ⁹ Ω
Chemical resistance	EN ISO 26987	✓	✓
	ASTM F925-02	✓	✓
Bacterial resistance	EN ISO846:1999	✓	✓
Antimicrobial activity	ISO 27447	>99 %	>99 %
Light fastness	EN 20105 B02	grade 6	grade 6
Castor chair resistance	EN ISO 4918	✓	✓
Surface treatment		TECHSurface	TECHSurface
Anti bacterial and fungicid treatment		Silver Knight	Silver Knight
Seaming method		hot or cold welding	
Warranty		15 year	15 year

SILVER KNIGHT

Natural

DIAMOND TECH



2075-378



2085-378



3151-378



2518-371



2561-371



1151-371



2239-371



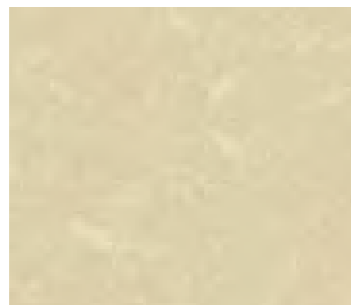
1141-371



SILVER KNIGHT

Silk

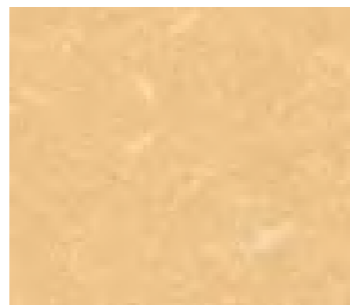
ACOUSTIC 7
DIAMOND TECH



455-881



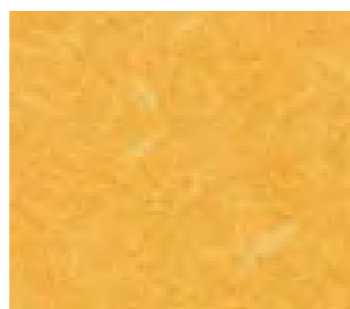
455-865



455-867



455-869



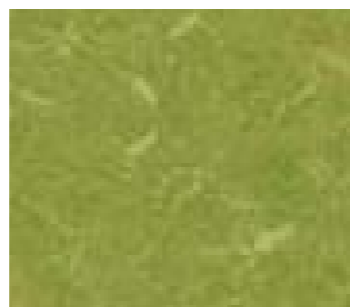
455-884



455-885



455-859



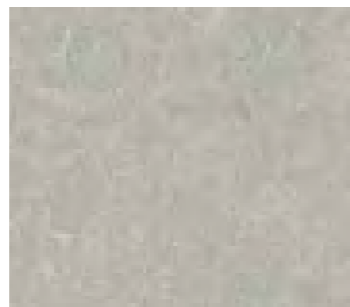
455-886



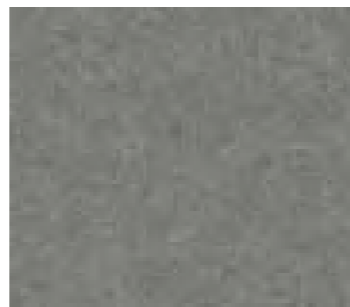
455-866



455-858



455-856

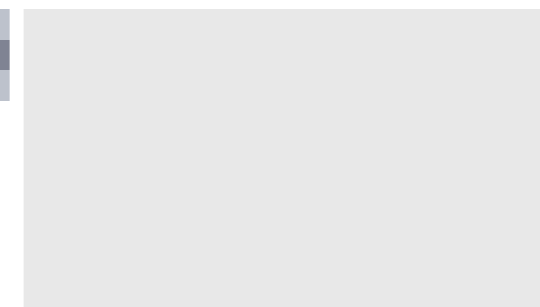


455-857

SILVER KNIGHT

Uni

DIAMOND TECH



1001



1194



1343



1895

HETEROGENEOUS

GRABO

Diamond

PREMIUM COMPACT FLOOR COVERING

RECOMMENDED
USAGE

- > Education
- > Healthcare
- > Offices
- > Retail
- > Hospitality

2.0
mm

TOTAL THICKNESS

2.8
kg/m²

TOTAL WEIGHT

2
m

WIDTH OF ROLLS

34 43

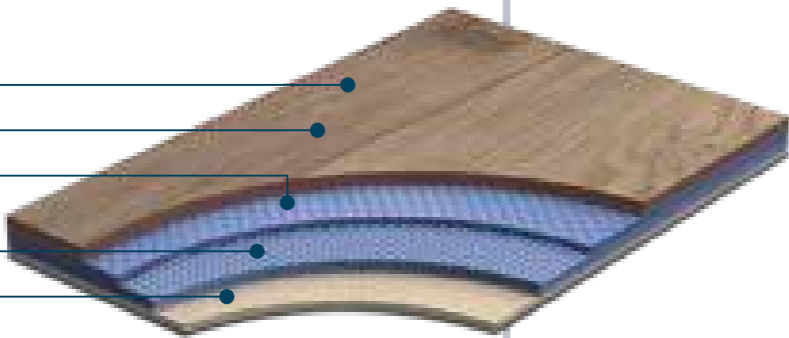
EUROPEAN
CLASSIFICATION

PERFORMANCE, FEATURES & BENEFITS

Very durable, easy to clean surface | Extreme low residual indentation | Aesthetic matt shine | Increased lifespan | Antistatic Anti-bacterial | 10 year warranty

CONSTRUCTION

- X-Pur Wear layer
- Design
- Compact layer
- Glass fibre reinforcement
- Backing layer



SPECIFICATIONS

DESCRIPTION

Construction	compact heterogeneous	
Total thickness	EN ISO 24346	2,0 mm
Wear layer thickness	EN ISO 24340	0,7 mm
Width of roll	EN ISO 24341	2 m
Length of roll	EN ISO 24341	20 lm
Total weight	EN ISO 23997	2,8 kg/m ²

CLASSIFICATION

European classification	EN 685	class: 34/43
-------------------------	--------	--------------

PERFORMANCE

Abrasion group	EN 660-1	T
Residual indentation	EN ISO 24343	max. 0,1 mm
	EN ISO 24343	measured 0,01 mm
Dimensional stability	EN ISO 23999	max. 0,2 %
Fire resistance	EN 13501-1	class: Bfl-s1
Slip resistance	DIN 51130	R10
Electrical resistance	EN 1815	< 2 kV
Chemical resistance	EN ISO 26987	✓
Bacterial resistance	EN ISO846:1999	✓
Light fastness	EN 20105 B02	grade 6
Castor chair resistance	EN ISO 4918	✓
Surface treatment	X-Pur	
Anti bacterial and fungicid treatment	graboSAN	
Enviromental attributes	Phthalate-, solvent and heavy metal free product	
VOC	✓	
Seaming method	hot or cold welding	
Warranty	10 year	

XPUR



DIAMOND

Natural



393-672-281



1001-371-891-281



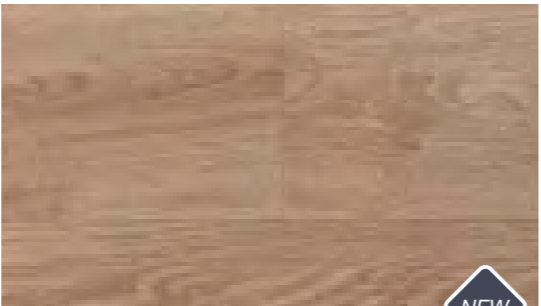
393-873-281



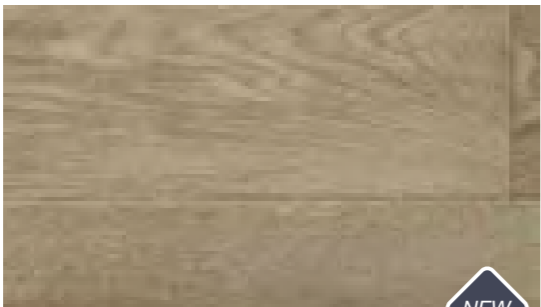
393-652-281



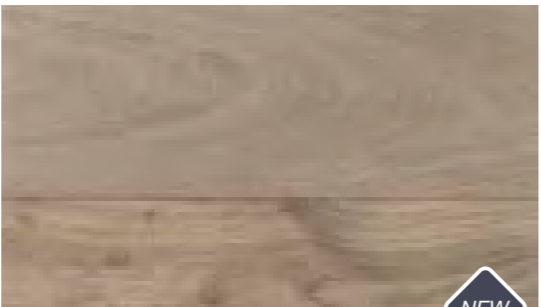
393-870-281



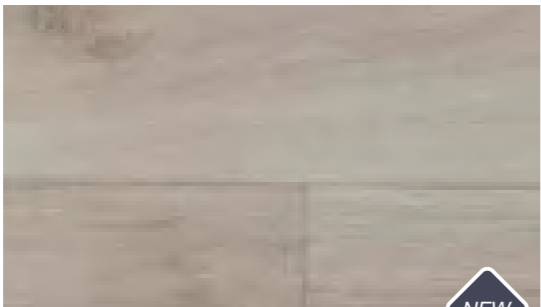
393-669-281



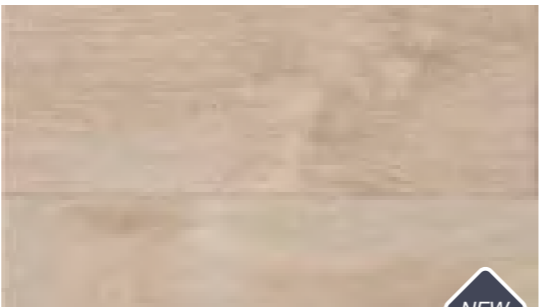
393-874-281



1001-371-890-281



1001-384-885-281



1001-384-874-281



DIAMOND

Concrete



391-674-275



391-673-275



391-653-275



391-660-275



391-654-275



391-676-275



391-656-275



391-671-275



HETEROGENEOUS

GRABO

Acoustic 43

PREMIUM ACOUSTIC FLOOR COVERING

RECOMMENDED
USAGE

- > Library
- > Education
- > Healthcare
- > Corporate
- > Retail
- > Anywhere acoustical property is needed

3.2
mm

TOTAL THICKNESS

2.6
kg/m²

TOTAL WEIGHT

2
m

WIDTH OF ROLLS

34 42

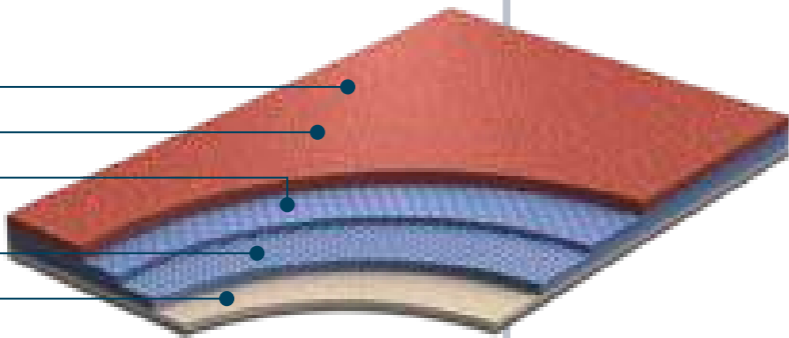
EUROPEAN
CLASSIFICATION

PERFORMANCE, FEATURES & BENEFITS

Excellent acoustic properties (≥19 dB) | Excellent foot comfort
Perfect chemical resistance and easy cleaning | Antistatic
Anti-bacterial | 10 year warranty

CONSTRUCTION

- X-Pur Wear layer
- Design
- Compact layer
- Glass fibre reinforcement
- Foam backing



SPECIFICATIONS

DESCRIPTION

Construction	heterogeneous	
Total thickness	EN ISO 24346	3,2 mm
Wear layer thickness	EN ISO 24340	0,7 mm
Width of roll	EN ISO 24341	2 m
Length of roll	EN ISO 24341	25 lm
Total weight	EN ISO 23997	2,6 kg/m ²

CLASSIFICATION

European classification	EN 685	class: 34/42
-------------------------	--------	--------------

PERFORMANCE

Abrasion group	EN 660-1	T
Residual indentation	EN ISO 24343	max. 0,2 mm
Dimensional stability	EN ISO 23999	max. 0,2 %
Fire resistance	EN 13501-1	class: Bfl-s1
	BS 476	class: Class1
	Gost 30402-94	class: G1
Impact sound reduction	EN ISO 717-2	ΔL _w =19 dB
Slip resistance	DIN 51130	R10
Electrical resistance	EN 1815	< 2 kV
	EN 1081	≤ 10 ⁹ Ω
Chemical resistance	EN ISO 26987	✓
Bacterial resistance	EN ISO846:1999	✓
Light fastness	EN 20105 B02	grade 6
Castor chair resistance	EN ISO 4918	✓
Surface treatment	X-Pur	
Anti bacterial and fungicid treatment	graboSAN	
Seaming method	hot or cold welding	
Warranty	10 year	

XPUR



Natural



2519-371-662-281



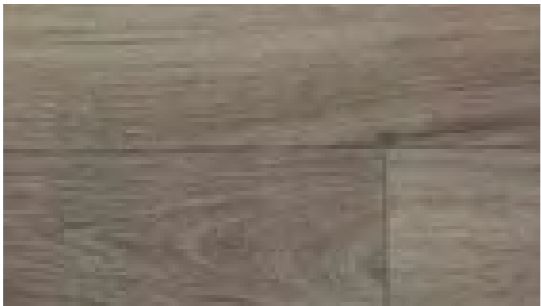
3151-378-858-281



1146-393-668-281



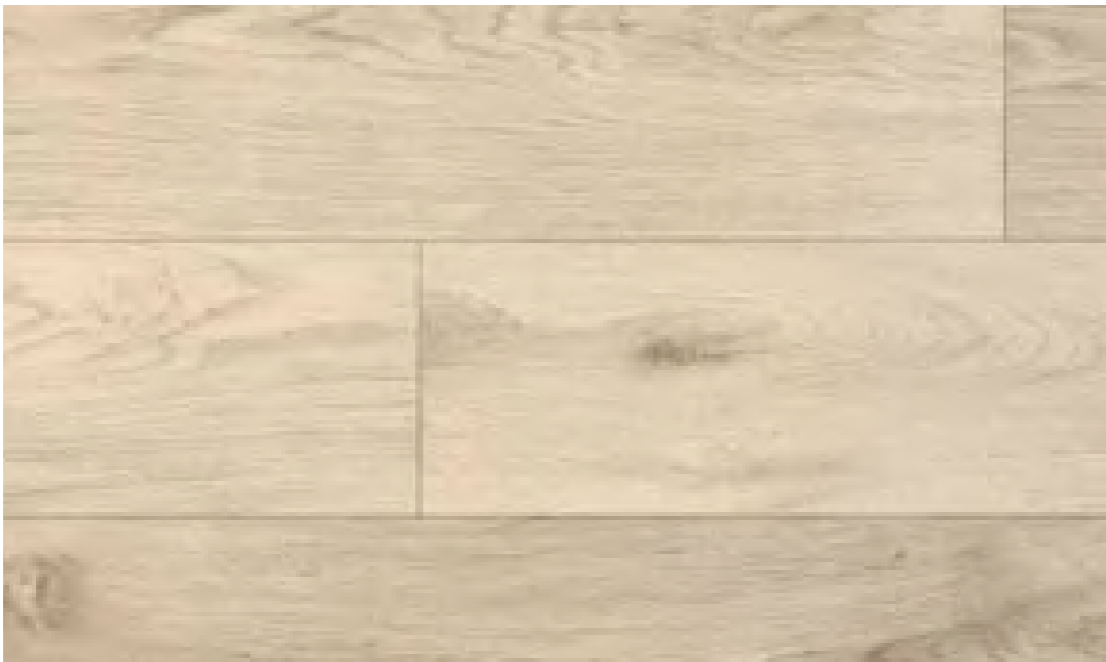
2561-384-867-281



1151-371-869-281



1141-371-868-281



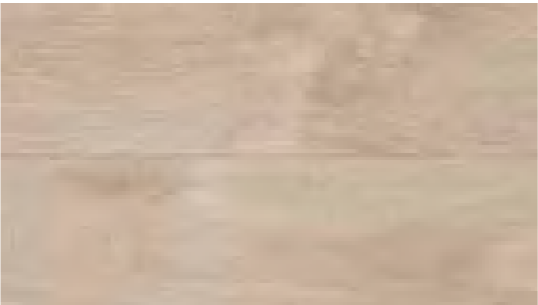
393-672-281



393-652-281



393-653-281



1001-384-874-281



393-669-281



Concrete



391-674-275



391-673-275



391-653-275



391-660-275



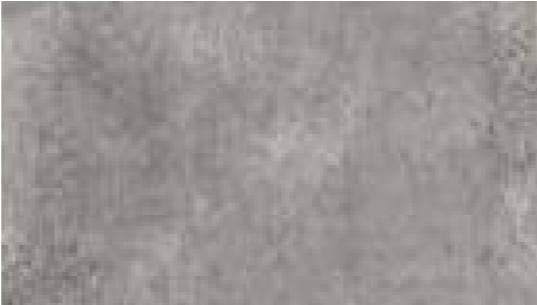
391-654-275



391-676-275



391-656-275



391-671-275



Rock



386-674-275



386-670-275



386-683-275



386-671-275



386-657-275



386-668-275



386-680-275



386-681-275



386-678-275

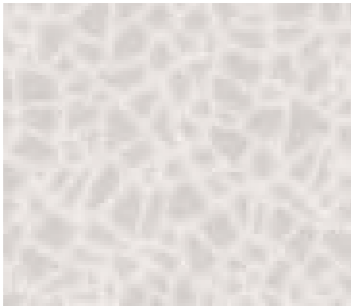


386-682-275

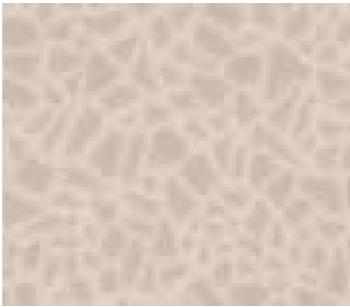


ACOUSTIC 43

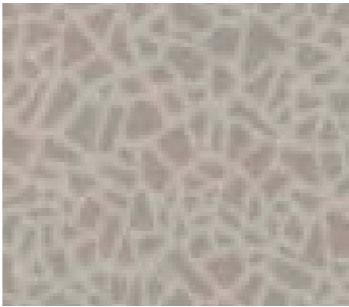
Mosaic



388-656-275



388-669-275



388-671-275



388-664-275



388-665-275



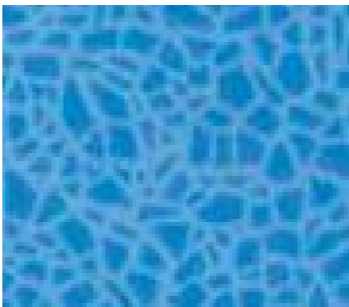
388-674-275



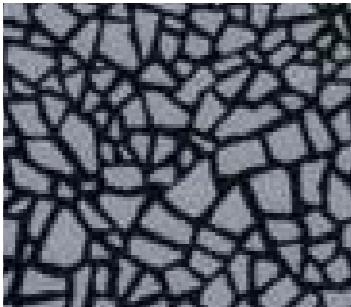
388-662-275



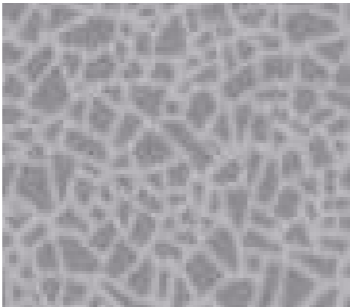
388-668-275



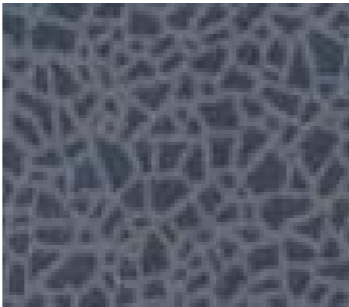
388-658-275



388-677-275



388-670-275



388-657-275



ACOUSTIC 43

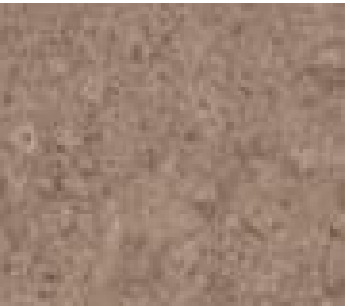
Mineral



383-00-651-275



383-00-653-275



383-00-674-275



383-00-664-275



383-00-675-275



383-00-687-275



383-00-661-275



383-00-678-275



383-00-689-275



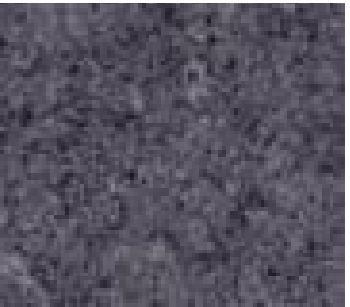
383-00-669-275



383-00-671-275



383-00-657-275



383-00-677-275

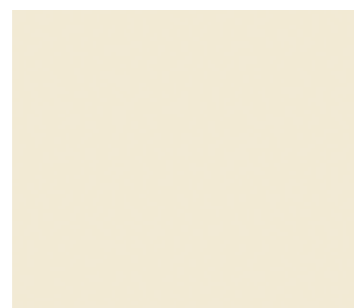


ACOUSTIC 43

Uni

XPUR

SOLVENT
FREE
NOI
WAX
grabo
SAN
minimize
the growth of
microorganisms



1008-275



2028-275



2940-275



2956-275



2089-275



3070-275



1343-275



1194-275



3319-275



7235-275



3258-275



4220-275



6180-275



6150-275



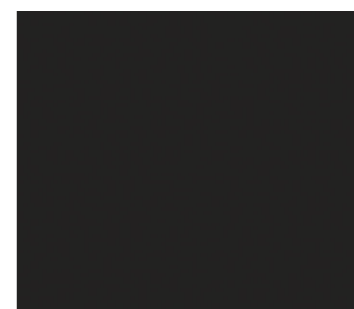
6110-275



1290-275



1895-275



1991-275



HETEROGENEOUS

GRABO

Acoustic Pro

HIGH PERFORMANCE ACOUSTICAL FLOOR COVERING

RECOMMENDED
USAGE

- > Library
- > Education
- > Healthcare
- > Corporate
- > Retail
- > Anywhere acoustical property is needed

3.2
mm

TOTAL THICKNESS

2.5
kg/m²

TOTAL WEIGHT

2 | 4
m

WIDTH OF ROLLS

33 42

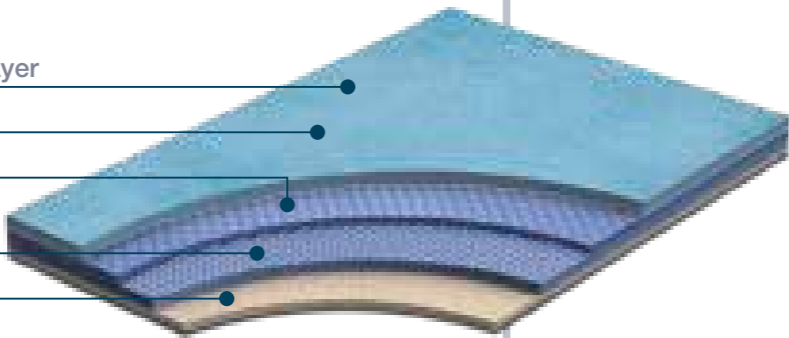
EUROPEAN
CLASSIFICATION

PERFORMANCE, FEATURES & BENEFITS

Excellent acoustic properties (≥19 dB) | Excellent foot comfort
Dimensionally stable | Increased lifespan | Antistatic
Anti-bacterial | 7 year warranty

CONSTRUCTION

- PUR Surface Wear layer
- Design
- Compact layer
- Glass fibre reinforcement
- Foam backing



SPECIFICATIONS

DESCRIPTION

Construction	heterogeneous	
Total thickness	EN ISO 24346	3,2 mm
Wear layer thickness	EN ISO 24340	0,55 mm
Width of roll	EN ISO 24341	2 4 m
Length of roll	EN ISO 24341	25 lm
Total weight	EN ISO 23997	2,5 kg/m ²

CLASSIFICATION

European classification	EN 685	class: 33/42
-------------------------	--------	--------------

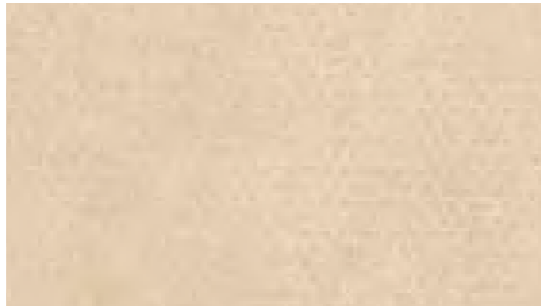
PERFORMANCE

Abrasion group	EN 660-1	T
Residual indentation	EN ISO 24343	max. 0,2 mm
Dimensional stability	EN ISO 23999	max. 0,2 %
Fire resistance	EN 13501-1	class: Bfl-s1
	BS 476	class: Class1
	Gost 30402-94	class: G1
Impact sound reduction	EN ISO 717-2	ΔL _w =19 dB
Slip resistance	DIN 51130	R9
Electrical resistance	EN 1815	< 2 kV
	EN 1081	≤ 10 ⁹ Ω
Chemical resistance	EN ISO 26987	✓
Bacterial resistance	EN ISO846:1999	✓
Light fastness	EN 20105 B02	grade 6
Castor chair resistance	EN ISO 4918	✓
Surface treatment	PUR Surface	
Anti bacterial and fungicid treatment	graboSAN	
Seaming method	hot or cold welding	
Warranty	7 year	

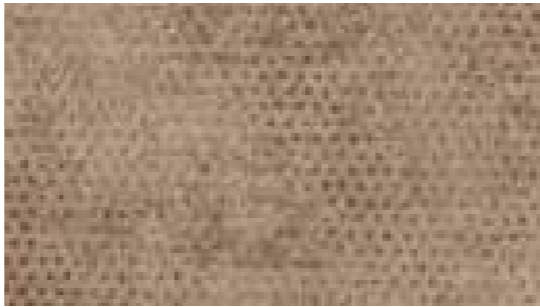


Acoustic Pro

PUR
SURFACE
SOLVENT
FREE
NOI
WAX
grabo
SAN
minimize
the growth of
microorganisms



4313-471-4



4313-467-4



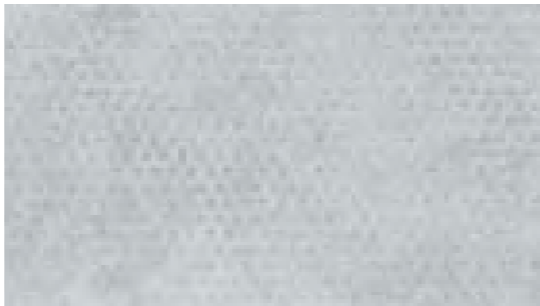
4313-464-4



4313-460-4



4313-458-4



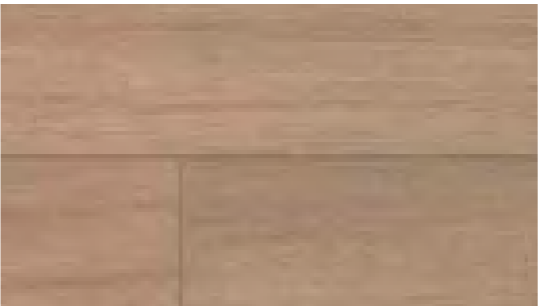
4313-472-4



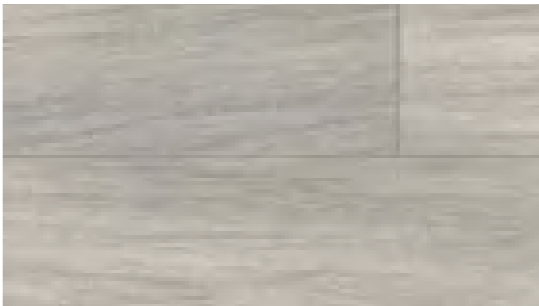
4313-473-4



4313-474-4



4259-501-5



4259-503-5



4259-504-5

HETEROGENEOUS

GRABO

Grabosafe silver Knight

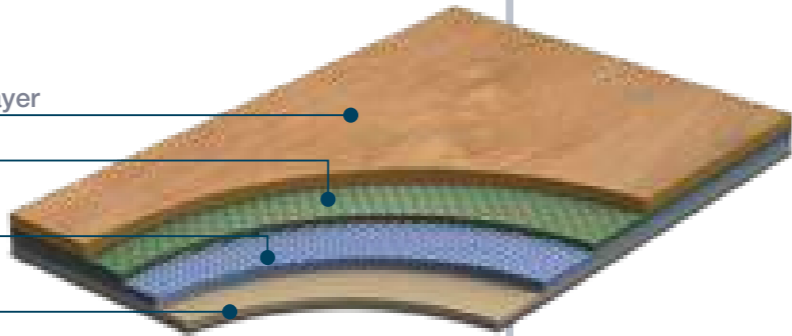
SELF-DISINFECTIVE SAFETY FLOOR COVERING

PERFORMANCE, FEATURES & BENEFITS

Destroys harmful bacteria | Excellent slip resistance | Durability
Premium vlies backing | Flexibility | 10 year warranty

CONSTRUCTION

- Silver Knight
Tech Surface wear layer
- PVC Layer
- Glass fibre
reinforcement
- Flexyback®
non-woven backing



SPECIFICATIONS

DESCRIPTION

Construction	compact heterogeneous	
Total thickness	EN ISO 24346	2,0 mm
Wear layer thickness	EN ISO 24340	0,7 mm
Width of roll	EN ISO 24341	2 m
Length of roll	EN ISO 24341	20 lm
Total weight	EN ISO 23997	2,6 kg/m²

CLASSIFICATION

European classification	EN 685	class: 34/43
-------------------------	--------	--------------

PERFORMANCE

Abrasion group	EN 660-1	T
Residual indentation	EN ISO 24343	max. 0,1 mm
Dimensional stability	EN ISO 23999	max. 0,2 %
Fire resistance	EN 13501-1	Bfl-s
Slip resistance	RRL Pendulum Test	>36 (wet test)
	DIN 51130	R10
Chemical resistance	EN ISO 26987	✓
Bacterial resistance	EN ISO846:1999	✓
Light fastness	EN 20105 B02	grade 6
Castor chair resistance	EN ISO 4918	✓
Surface treatment	Tech Surface	
Anti bacterial and fungicid treatment	Silver Knight	
Seaming method	hot or cold welding	
Warranty	10 year	



RECOMMENDED
USAGE

- > Healthcare
- > Education
- > Entrances
- > Receptions
- > Corridors
- > Ramps
- > Elevators
- > Kitchens

2.0
mm

TOTAL THICKNESS

2.6
kg/m²

TOTAL WEIGHT

2
m

WIDTH OF ROLLS

34 43

EUROPEAN
CLASSIFICATION

Natural



1001-384-851



1003-384-856



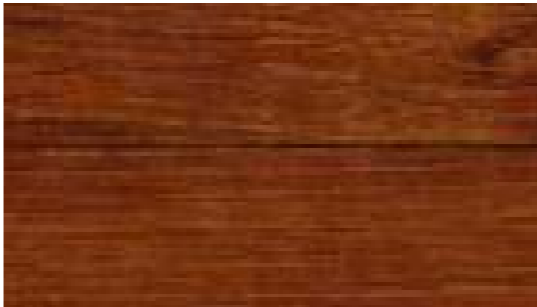
2561-384-867



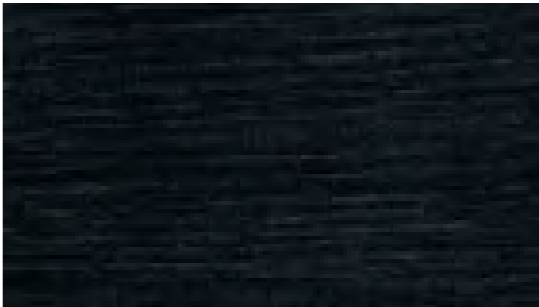
2086-384-855



2096-384-857



2239-384-868



1243-384-869

HETEROGENEOUS

GRABO

Grabosafe 20 JSK

THE MOST DURABLE SAFETY FLOOR COVERING

PERFORMANCE, FEATURES & BENEFITS

Excellent slip resistance | Excellent durability | Dimensionally stable Ant-bacterial | 10 year warranty

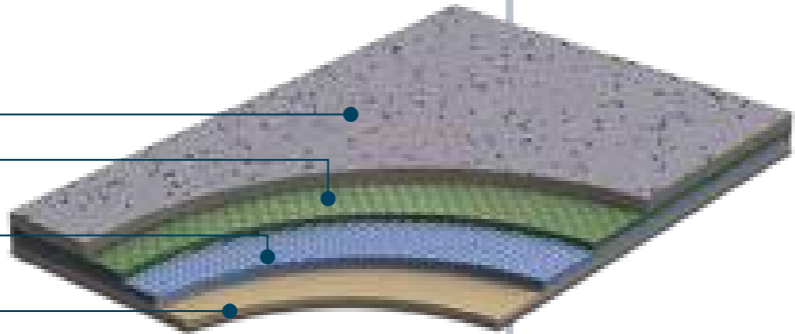
CONSTRUCTION

CLP wear layer

PVC Layer

Glass fibre reinforcement

Flexyback® non-woven backing



SPECIFICATIONS

DESCRIPTION

Construction	compact heterogeneous	
Total thickness	EN ISO 24346	2,0 mm
Wear layer thickness	EN ISO 24340	0,9 mm
Width of roll	EN ISO 24341	2 m
Length of roll	EN ISO 24341	20 lm
Total weight	EN ISO 23997	2,6 kg/m²

CLASSIFICATION

European classification	EN 685	class: 34/43
-------------------------	--------	--------------

PERFORMANCE

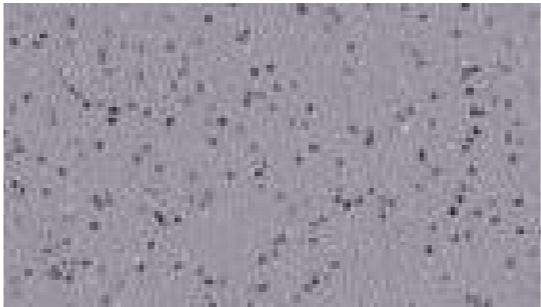
Abrasion group	EN 660-1	T
Residual indentation	EN ISO 24343	max. 0,1 mm
Dimensional stability	EN ISO 23999	max. 0,2 %
Fire resistance	EN 13501-1	class: Bfl-s1
	BS 476	class: 1
	DIN 4102/ÖNORM	class: B1
Slip resistance	Gost 30402-94	class: G1
	DIN 51130	R10
	DIN 51097	C
Abrasion resistance	EN 13893	class: DS
	ISO 9352	-0,25 g/1000 circle
Shore A hardness	ISO 868	90
Chemical resistance	EN ISO 26987	✓
Bacterial resistance	EN ISO846:1999	✓
Light fastness	EN 20105 B02	grade 6
Castor chair resistance	EN ISO 4918	✓
Surface treatment	CLP	
Anti bacterial and fungicid treatment	graboSAN	
Seaming method	hot or cold welding	
Warranty	10 year	



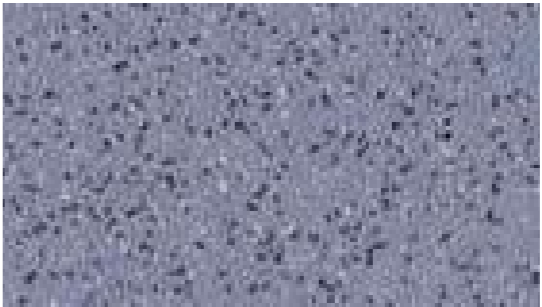
2251-03



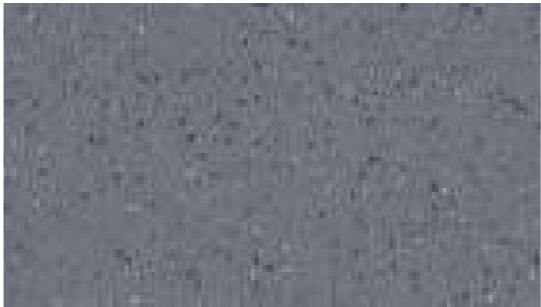
5161-03



1260-03



6345-03



6091-03



1991-03



2.0 mm

TOTAL THICKNESS

2.6 kg/m²

TOTAL WEIGHT

2 m

WIDTH OF ROLLS

34 43

EUROPEAN CLASSIFICATION

HETEROGENEOUS

GRABO
Ecosafe

COST EFFECTIVE SAFETY FLOOR COVERING

RECOMMENDED
USAGE

- > Wet areas
- > Ramps
- > Food prep areas
- > Anywhere safety floor is needed

2.0
mm

TOTAL THICKNESS

2.7
kg/m²

TOTAL WEIGHT

2
m

WIDTH OF ROLLS

34 43

EUROPEAN
CLASSIFICATION

PERFORMANCE, FEATURES & BENEFITS

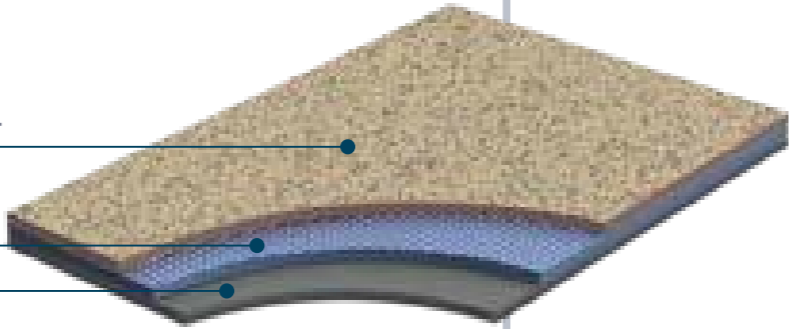
Excellent slip resistance | Cost effective | Great color range
Dimensionally stable | Anti-bacterial | 10 year warranty

CONSTRUCTION

Easy Care wear layer

Glass fibre
reinforcement

PVC backing



SPECIFICATIONS

DESCRIPTION

Construction	compact heterogeneous	
Total thickness	EN ISO 24346	2,0 mm
Wear layer thickness	EN ISO 24340	0,7 mm
Width of roll	EN ISO 24341	2 m
Length of roll	EN ISO 24341	20 lm
Total weight	EN ISO 23997	2,7 kg/m ²

CLASSIFICATION

European classification	EN 685	class: 34/43
-------------------------	--------	--------------

PERFORMANCE

Abrasion group	EN 660-1	T
Residual indentation	EN ISO 24343	max. 0,1 mm
Dimensional stability	EN ISO 23999	max. 0,2 %
Fire resistance	EN 13501-1	class: Bfl-s1
	DIN 4102/ÖNORM	class: B1
	ASTM E 648/662	class: Class1/pass
	Gost 30402-94	class: G1
Slip resistance	DIN 51130	R10
	ASTM D2047-99	dry: 0,92/wet: 0,84
	EN 13893	class: DS
	RRL Pendulum Test	>36 (wet test)
Abrasion resistance (H-18 wheel)	ASTM D3884-01	-0,19 g/1000 circle
Abrasion resistance	ISO 9352	-0,25 g/1000 circle
Chemical resistance	EN ISO 26987	✓
	ASTM F925-02	✓
Light fastness	EN 20105 B02	grade 6
Castor chair resistance	EN ISO 4918	✓
Surface treatment	Easy Care	
Anti bacterial and fungicid treatment	graboSAN	
Seaming method	hot or cold welding	
Warranty	10 year	



EASYCARE

SOLVENT
FREE
NO
WAX

grabo
SAN
minimize
the growth of
microorganisms



Ecosafe



1137-20-279



1204-663



1017-664



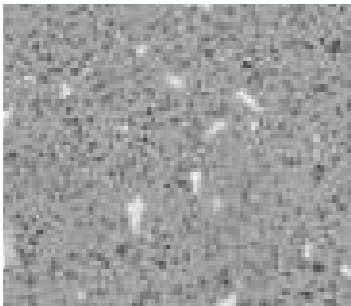
2036-20-279



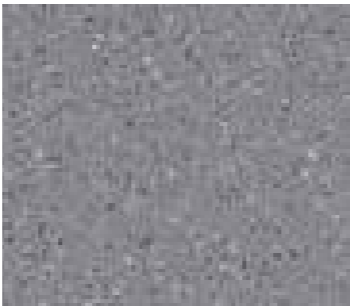
2942-20-279



2954-659



1341-662



1260-20-279



1396-660



1173-20-279



1424-20-279



6123-661



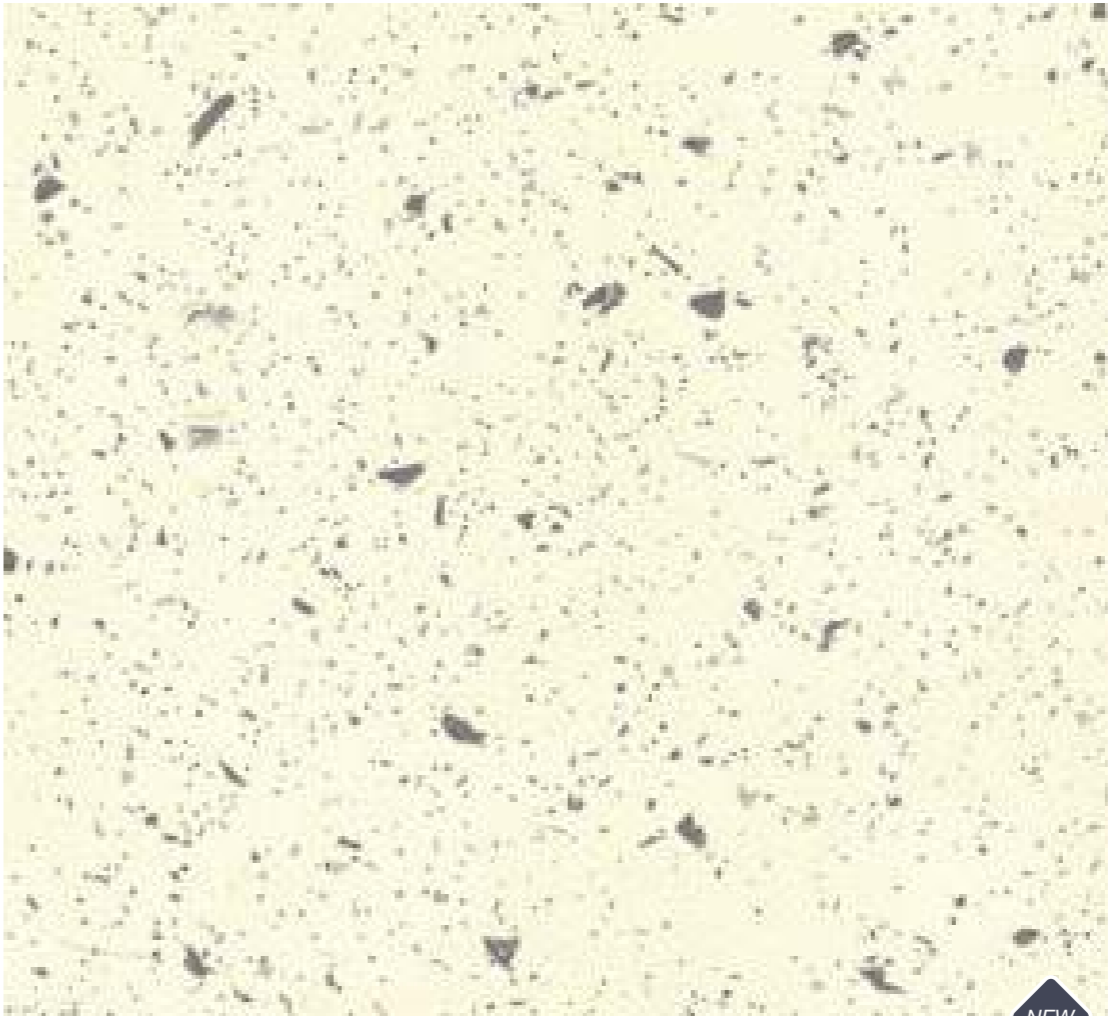
1387-20-279



1991-20-279



6342-20-279



1193-504

NEW



1204-20-279

NEW



2009-20-279

NEW



7230-20-279

NEW



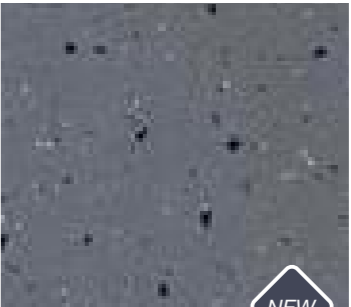
5028-20-279

NEW



1175-20-279

NEW



1387-503

NEW



HETEROGENEOUS

GRABO

Standart

COST EFFECTIVE COMPACT FLOOR COVERING

RECOMMENDED
USAGE

- > Education
- > Healthcare
- > Retail
- > Hospitality
- > Offices

PERFORMANCE, FEATURES & BENEFITS

2/4 meter widths | Cost effective | Broad color range
Great patterns | High residual indentation | Dimensionally stable
Anti-bacterial | Antistatic | 10 year warranty

CONSTRUCTION

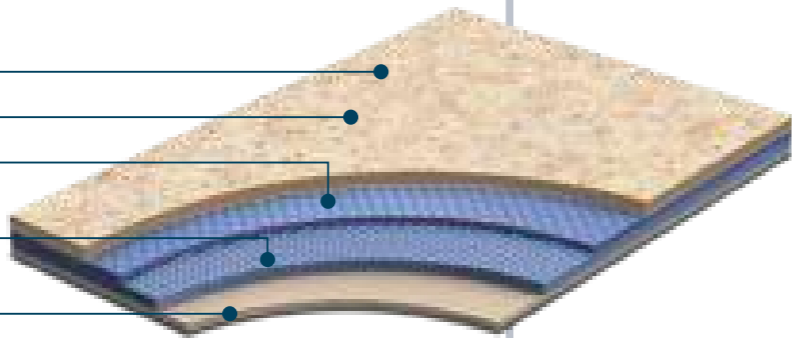
Wear layer

Design

Compact layer

Glass fibre
reinforcement

Back layer



SPECIFICATIONS

DESCRIPTION

Construction	heterogeneous	
Total thickness	EN ISO 24346	2,0 mm
Wear layer thickness	EN ISO 24340	0,7 mm
Width of roll	EN ISO 24341	2/4 m
Length of roll	EN ISO 24341	20 lm
Total weight	EN ISO 23997	2,2 kg/m²

CLASSIFICATION

European classification	EN 685	class: 34/43
-------------------------	--------	--------------

PERFORMANCE

Abrasion group	EN 660-1	T
Residual indentation	EN ISO 24343	max. 0,1 mm
Dimensional stability	EN ISO 23999	max. 0,2 %
Fire resistance	EN 13501-1	class: Bfl-s1
	DIN 4102/ÖNORM	class: B1
	Gost 30402-94	class: G1
Slip resistance	DIN 51130	R9
	EN 13893	class: DS
Electrical resistance	EN 1815	< 2 kV
	EN 1081	≤ 10 ⁹ Ω
Chemical resistance	EN ISO 26987	✓
Bacterial resistance	EN ISO846:1999	✓
Light fastness	EN 20105 B02	grade 6
Castor chair resistance	EN ISO 4918	✓
Anti bacterial and fungicid treatment		graboSAN
Seaming method		hot or cold welding
Warranty		10 year



2.0
mm

TOTAL THICKNESS

2.2
kg/m²

TOTAL WEIGHT

2 | 4
m

WIDTH OF ROLLS

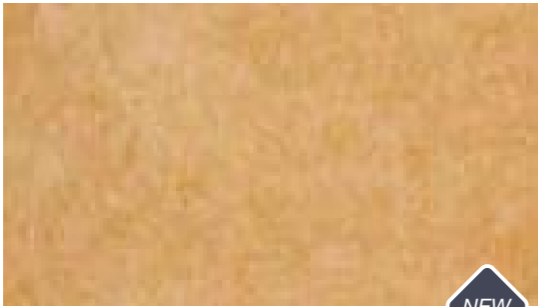
34 | 43

EUROPEAN
CLASSIFICATION



Stone

SOLVENT
FREE
NO
WAX
grabo
SAN
minimize
the growth of
microorganisms



4319-487



4319-475



4319-473



4319-472



4319-489



4319-485



4319-484



4319-486



4319-481



4319-488



STANDART PUR

Evolution



STANDART PUR

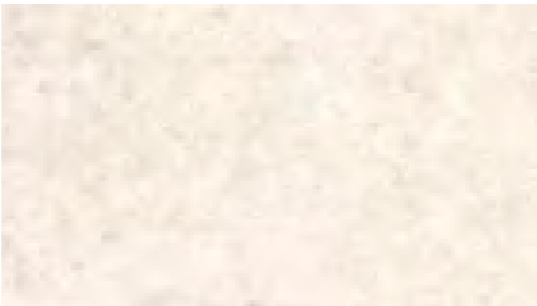
Evolution Natural



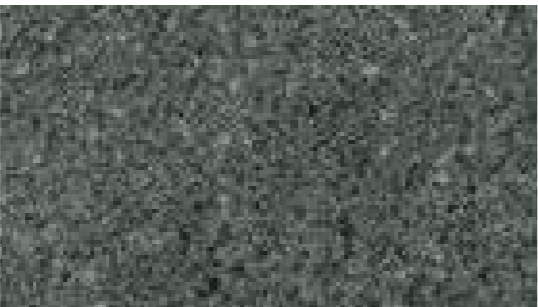
4235-487



4253-456



4253-466



4253-457



4253-468



4253-453



4235-489



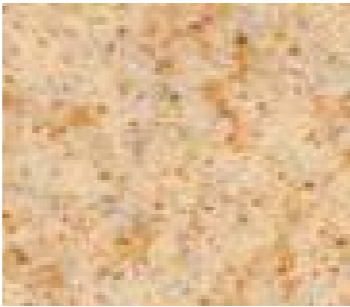
4159-471

STANDART PUR

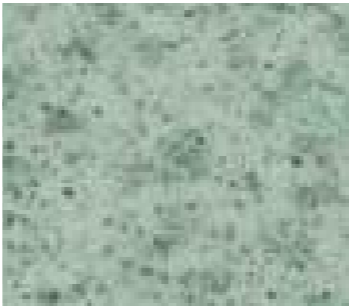
Metal



4564-469



4564-470



4564-460



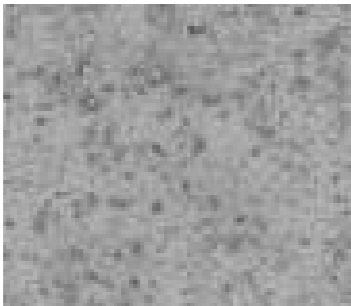
4564-493



4564-476



4564-494



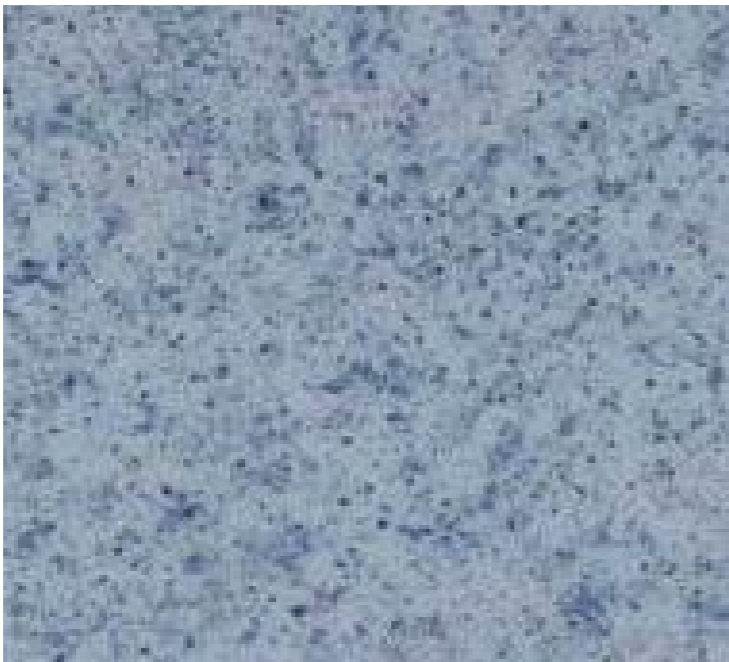
4564-496



4564-474



4564-473



4564-472



4564-471



STANDART

Talent



4313-471-4



4313-464-4



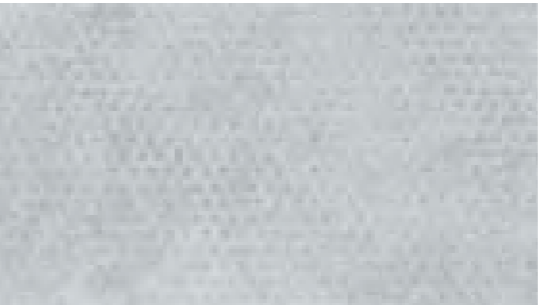
4313-470-4



4313-460-4



4313-458-4



4313-472-4



4313-474-4

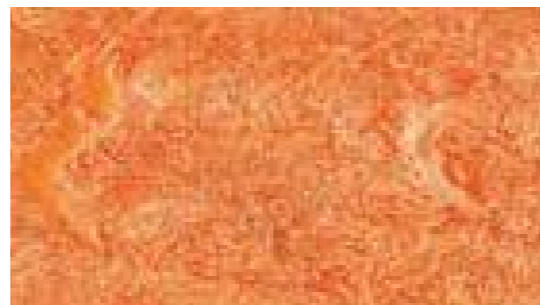


STANDART

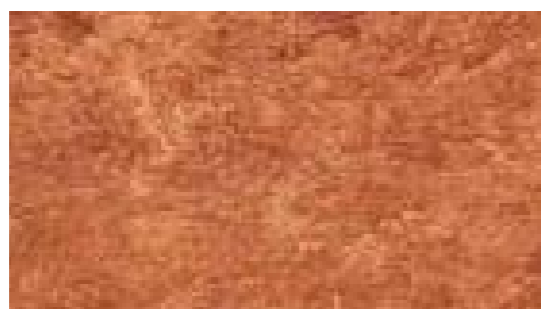
Forte



4213-453-4



4213-465-4



4213-455-4



4213-475-4



4213-464-4



4213-463-4



4213-456-4



4213-479-4



4213-469-4

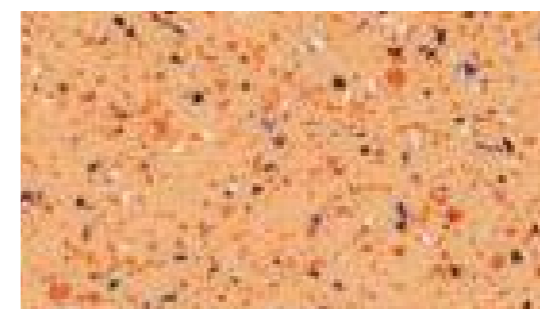


STANDART

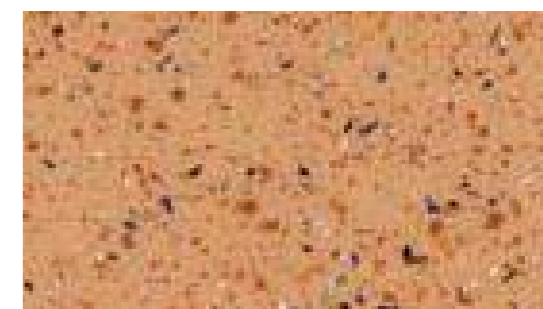
Plaza



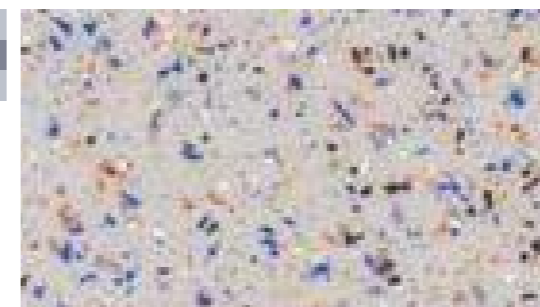
4115-456-06



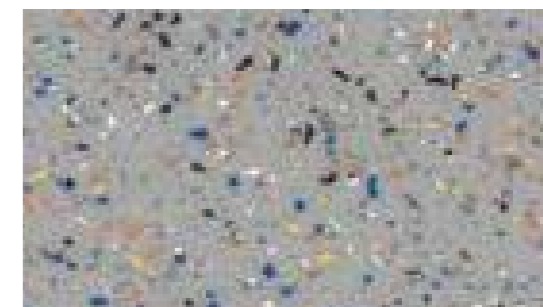
4115-453-06



4115-467-06



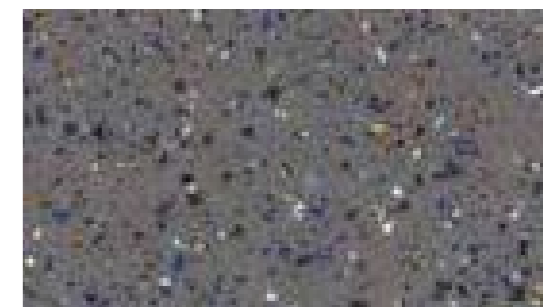
4115-458-06



4115-457-06



4115-469-06



4115-468-06



Heterogeneous

light commercial floor coverings

- > AURA
- > TOP
- > ASTRAL
- > SOUNDTEX 5.0



HETEROGENEOUS
LIGHT COMMERCIAL

GRABO Aura

LIGHT COMMERCIAL VINYL FLOOR COVERING

RECOMMENDED USAGE

- > Kindergartens
- > Rooms
- > Halls
- > Kitchens

PERFORMANCE, FEATURES & BENEFITS

2/4 meter widths | cost effective | Broad color range
Great patterns | High residual indentation | Dimensionally stable,
Anti-bacterial | Antistatic | 7 year warranty

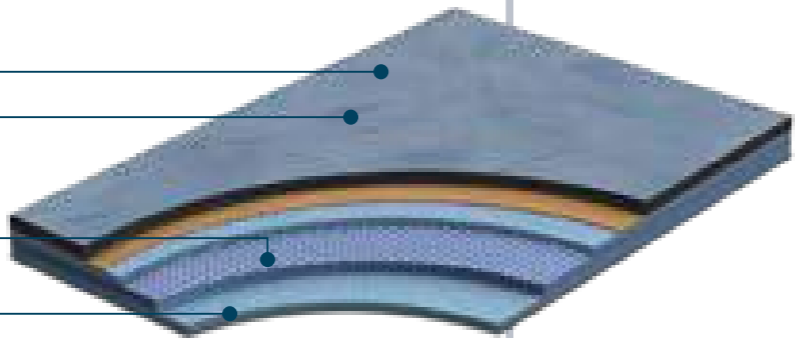
CONSTRUCTION

Wear layer

Design

Glass fibre
reinforcement

Foam layer



SPECIFICATIONS

DESCRIPTION

Construction		heterogeneous
Total thickness	EN ISO 24346	2,0 mm
Wear layer thickness	EN ISO 24340	0,4 mm
Width of roll	EN ISO 24341	2 4 m
Standard length of rolls	EN ISO 24341	25 lm
Normal length of rolls	EN ISO 24341	18-27 lm
Total weight	EN ISO 23997	1,8 kg/m²

CLASSIFICATION

Classification	EN 685	class: 23/32/41
----------------	--------	-----------------

PERFORMANCE

Abrasion group	EN 660-1	T
Residual indentation	EN ISO 24343	max. 0,2 mm
Dimensional stability	EN ISO 23999	max. 0,2 %
Fire resistance	EN 13501-1	class: Bfl-s1
Slip resistance	DIN 51130	R9
	EN 13893	class: DS
Electrical resistance	EN 1815	< 2 kV
Chemical resistance	EN ISO 26987	✓
Bacterial resistance	EN ISO846:1999	✓
Light fastness	EN 20105 B02	grade 6
Castor chair resistance	EN ISO 4918	✓
Anti bacterial and fungicid treatment		graboSAN
Seaming method		hot or cold welding
Warranty		7 year



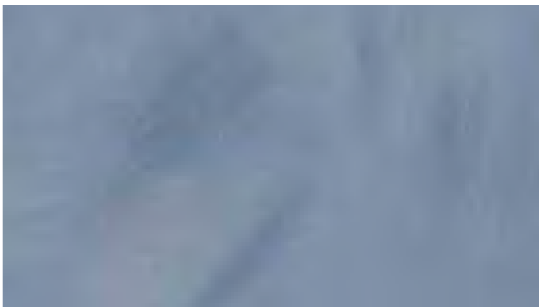
4592-471



4592-472



4592-460



4592-458



4592-465



4592-464



TOTAL THICKNESS



TOTAL WEIGHT



WIDTH OF ROLLS



EUROPEAN
CLASSIFICATION

HETEROGENEOUS
LIGHT COMMERCIAL

GRABO Top

LIGHT COMMERCIAL VINYL FLOOR COVERING

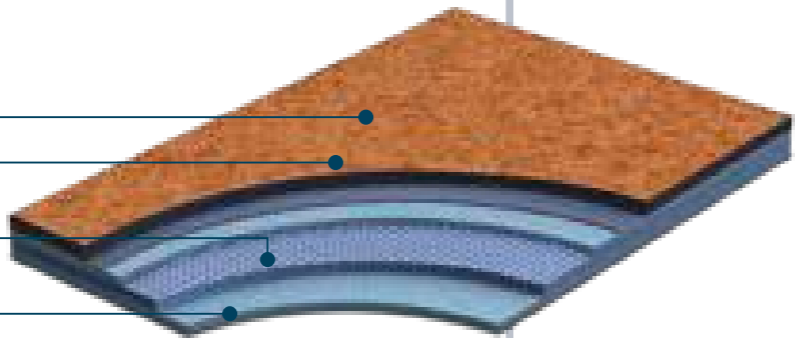
Grabo TOP Range vinyl floorcovering due to its high technical performance is suitable product for the heavy duty residential applications and for moderate traffic public areas as well. This floor provides excellent foot comfort.

RECOMMENDED USAGE

- > Kindergartens
- > Rooms
- > Halls
- > Kitchens

CONSTRUCTION

- Wear layer
- Design
- Glass fibre reinforcement
- Foam layer



SPECIFICATIONS

DESCRIPTION

Construction		heterogeneous
Total thickness	EN ISO 24346	2,4 mm
Wear layer thickness	EN ISO 24340	0,5 mm
Width of roll	EN ISO 24341	2 3 4 m
Standard length of rolls	EN ISO 24341	25 lm
Normal length of rolls	EN ISO 24341	18-27 lm
Total weight	EN ISO 23997	2,0 kg/m²

CLASSIFICATION

Classification	EN 685	class: 23/33/42
----------------	--------	-----------------

PERFORMANCE

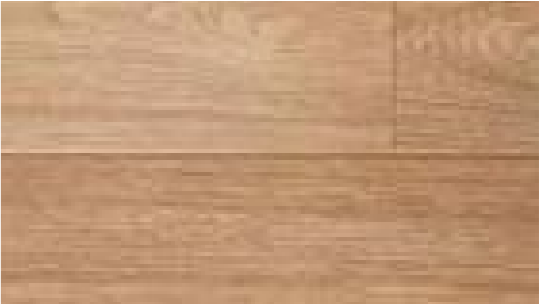
Residual indentation	EN ISO 24343	max. 0,2 mm
Dimensional stability	EN ISO 23999	max. 0,2 %
Fire resistance	EN 13501-1	class: Cfl-s1
Slip resistance	EN 13893	class: R9
Light fastness	EN 20105 B02	grade 6
Abrasion group	MSZ EN 660-1	T
Castor chair resistance	EN ISO 4918	✓
Warranty		7 year

TOP

Natural



4266-251 < 2 | 3 | 4 m >



4266-260 < 2 | 3 | 4 m >



4121-260 < 2 | 3 | 4 m >



4266-272 < 2 | 3 | 4 m >



4262-261 < 2 | 3 | 4 m >



4266-271 < 2 | 3 | 4 m >



2.4
mm

TOTAL THICKNESS

2.0
kg/m²

TOTAL WEIGHT

2 | 3 | 4
m

WIDTH OF ROLLS

23
33 42

EUROPEAN
CLASSIFICATION

TOP

Metal



4564-301 < 2 | 3 | 4 m >



4564-296 < 2 | 3 | 4 m >



4564-299 < 2 | 3 | 4 m >



4564-297 < 2 | 3 | 4 m >



4564-251 < 2 | 3 | 4 m >

TOP

Cloud



4261-252 < 2 | 3 | 4 m >



4261-257 < 2 | 3 | 4 m >



HETEROGENEOUS
LIGHT COMMERCIAL

GRABO Astral

LIGHT COMMERCIAL VINYL FLOOR COVERING

Grabo ASTRAL Family has excellent technical characters witch are associated with a design surplus. We offer this product to modern homes, offices, shops and educational buildings.

RECOMMENDED USAGE

- > Kitchens
- > Halls
- > Rooms
- > Classrooms
- > Offices

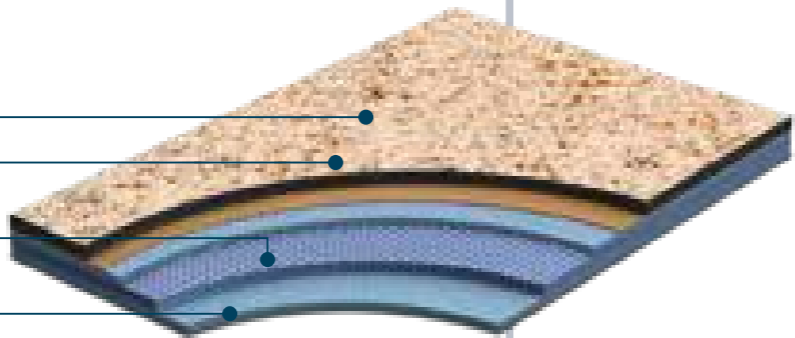
CONSTRUCTION

Wear layer

Design

Glass fibre
reinforcement

Foam layer



SPECIFICATIONS

DESCRIPTION

Construction		heterogeneous
Total thickness	EN ISO 24346	2,0 mm
Wear layer thickness	EN ISO 24340	0,4 mm
Width of roll	EN ISO 24341	2 3 4 m
Standard length of rolls	EN ISO 24341	25 lm
Normal length of rolls	EN ISO 24341	18-27 lm
Total weight	EN ISO 23997	1,8 kg/m²

CLASSIFICATION

Classification	EN 685	class: 23/32/41
----------------	--------	-----------------

PERFORMANCE

Residual indentation	EN ISO 24343	max. 0,2 mm
Dimensional stability	EN ISO 23999	max. 0,2 %
Fire resistance	EN 13501-1	class: Cfl-s1
Slip resistance	EN 13893	class: DS
Light fastness	EN 20105 B02	grade 6
Abrasion group	MSZ EN 660-1	T
Castor chair resistance	EN ISO 4918	✓
Warranty		7 year

2.0
mm

TOTAL THICKNESS

1.8
kg/m²

TOTAL WEIGHT

2 | 3 | 4
m

WIDTH OF ROLLS

23
32 41

EUROPEAN
CLASSIFICATION



ASTRAL

Chips



4564-452-05-4 < 2 | 3 | 4 m >



4564-454-05-4 < 2 | 3 | 4 m >



4581-465-08-4 < 2 | 4 m >



4564-467-05-4 < 2 | 3 | 4 m >

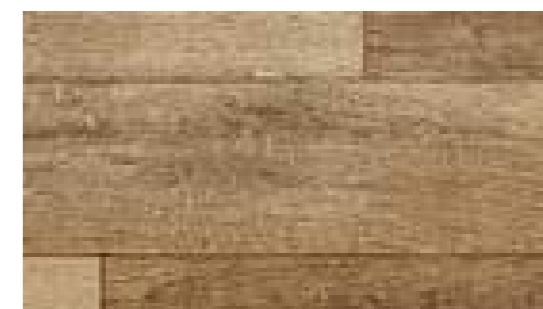


ASTRAL

Natural



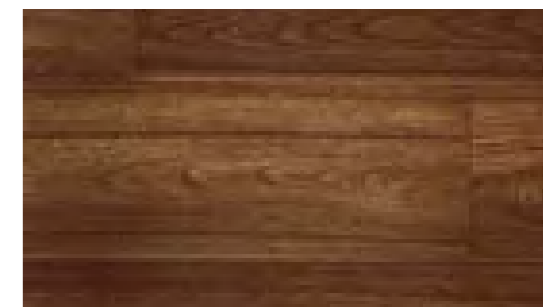
4235-465-5 < 2 | 3 | 4 m >



4235-462-5 < 2 | 3 | 4 m >



4263-452-5 < 2 | 3 | 4 m >



4266-454-5 < 2 | 3 | 4 m >

HETEROGENEOUS
LIGHT COMMERCIAL

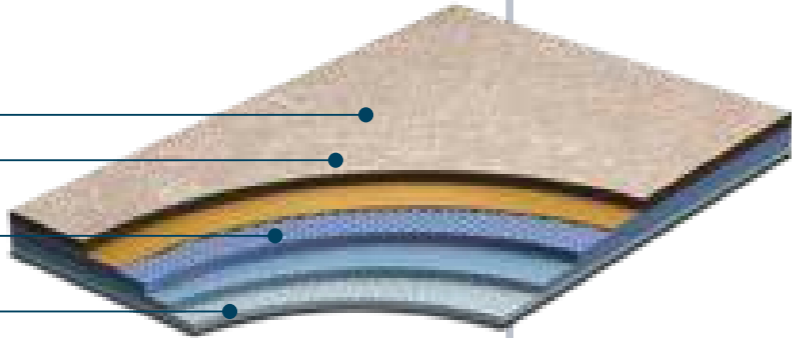
GRABO Soundtex 5.0

LIGHT COMMERCIAL VINYL FLOOR COVERING

Grabo SOUNDTEX 5.0 floorings combine good technical characteristics with extra design features. The product ensures excellent residual indentation, good comfort feeling, and thanks to the non-woven backing it can be installed without glue, which allows easier and quicker installation, especially in renovation projects.

CONSTRUCTION

- Wear layer
- Design layer
- Glass fibre reinforcement
- PES backing



SPECIFICATIONS

DESCRIPTION

Construction	heterogeneous	
Total thickness	EN ISO 24346	3,2 mm
Wear layer thickness	EN ISO 24340	0,5 mm
Width of roll	EN ISO 24341	2 3 4 m
Standard length of rolls	EN ISO 24341	25 lm
Normal length of rolls	EN ISO 24341	18-27 lm
Total weight	EN ISO 23997	2,2 kg/m²

CLASSIFICATION

Classification	EN 685	class: 23/33/42
----------------	--------	-----------------

PERFORMANCE

Residual indentation	EN ISO 24343	max. 0,35 mm
Dimensional stability	EN ISO 23999	max. 0,2 %
Fire resistance	EN 13501-1	class: Cfl-s1
Slip resistance	EN 13893	class: R9
Light fastness	EN 20105 B02	grade 6
Abrasion group	MSZ EN 660-1	T
Castor chair resistance	EN ISO 4918	✓
Warranty	7 year	

SOUNDTEX 5.0

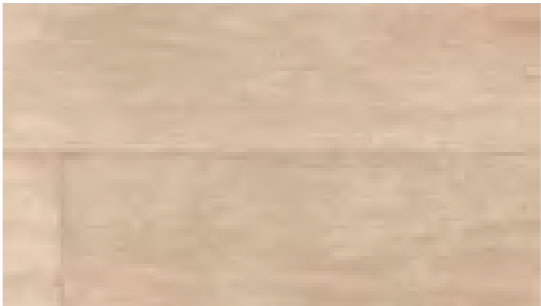
Natural



4235-456-5 < 2 | 4 m >



4259-504-5 < 2 | 4 m >



4235-452-5 < 2 | 4 m >



4263-482-4 < 2 | 4 m >



3.2
mm

TOTAL THICKNESS

2.2
kg/m²

TOTAL WEIGHT

2 | 3 | 4
m

WIDTH OF ROLLS

23
33 42

EUROPEAN
CLASSIFICATION

LVT

- > DOMINO 2.0
- > PLANK-IT
- > IDEAL
- > ROBUST

GRABO

Luxury vinyl tile

DOMINO 2.0 | PLANKIT | IDEAL | ROBUST

LUXURY VINYL TILE FLOORING FOR DOMESTIC AND COMMERCIAL USE

The Grabo LVT floorings are inspired by nature, manufactured with phthalate free technology and provides an environmentally friendly flooring solution for the users.

RECOMMENDED USAGE

- > Hospitality
- > Retail
- > Offices
- > Education



iGuard

NORMAL
FORMAT4 SIDE
BEVELED

DOMINO 2.0



PLANK-IT



IDEAL



ROBUST

CONSTRUCTION

iGuard PUR Protective coating

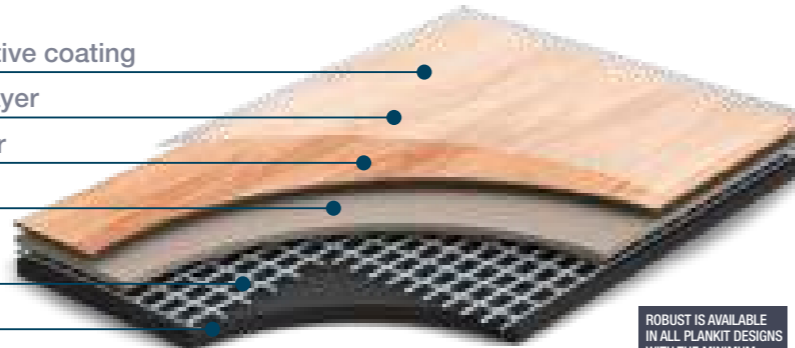
Transparent wear layer

Design printed layer

Middle layer

Glass fibre reinforcement

Back layer



ROBUST IS AVAILABLE
IN ALL PLANKIT DESIGNS
WITH THE MINIMUM
QUANTITY OF
2 PALETTES/DESIGN.

SPECIFICATIONS

DESCRIPTION		Domino 2.0	PlankIT	Ideal	Robust
Construction		Luxury Vinyl Tile with iGuard Surface			
Plank size wood	EN ISO 24346	185x1220 mm	185x1220 mm	185x1220 mm	185x1220 mm
	EN ISO 24346	158x950* mm	158x950* mm	158x950* mm	158x950 mm
Tile size stone	EN ISO 24346	305x610 mm	305x610 mm	305x610 mm	305x610 mm
Total thickness	EN ISO 24346	2,0 mm	2,5 mm	2,7 mm	3,0 mm
Wear layer thickness	EN ISO 24340	0,3 mm	0,55 mm	0,7 mm	1,0 mm
Total weight	EN ISO 23997	3,4 kg/m ²	3,8 kg/m ²	3,9 kg/m ²	4,6 kg/m ²

CLASSIFICATION

European classification	EN 685	class: 23/31	class: 33/42	class: 34/43	class: 34/43
Binder content	EN ISO 10582	Type I.	Type I.	Type I.	Type I.

PERFORMANCE

Abrasion group	EN 660-1	T	T	T	T
Residual indentation	EN ISO 24343	max. 0,1 mm	max. 0,1 mm	max. 0,1 mm	max. 0,1 mm
Dimensional stability	EN ISO 23999	max. 0,15 %	max. 0,15 %	max. 0,15 %	max. 0,15 %
Curling	EN ISO 23999	max. 2,0 mm	max. 2,0 mm	max. 2,0 mm	max. 2,0 mm
Fire resistance	EN 13501-1	class: Bfl-s1	class: Bfl-s1	class: Bfl-s1	class: Bfl-s1
Slip resistance	EN 13893	class: DS	class: DS	class: DS	class: DS
	DIN 51130	class: R10	class: R10	class: R10	class: R10
Electrical properties	EN 1815	max. 2 kV / Antistatic			
Chemical resistance	EN ISO 26987	✓	✓	✓	✓
	ASTM F925	✓	✓	✓	✓
Light fastness	EN 20105 B02	grade 6	grade 6	grade 6	grade 6
Castor chair resistance	EN ISO 4918	✓	✓	✓	✓
Surface treatment		iGuard PUR Surface / Easy cleaning			
Content of pcp	EN 12673	does not contain			
Formaldehyde emission	ENV 717-1	E1 (no emission)			
VOC	EN 12673	pass	pass	pass	pass
4 sides bevelling		–	Available	Available	Available
Warranty	Commercial	5 year	10 year	12 year	15 year
	Residential	10 year	15 year	17 year	20 year

*min. order quantity 2 pallets



LVT

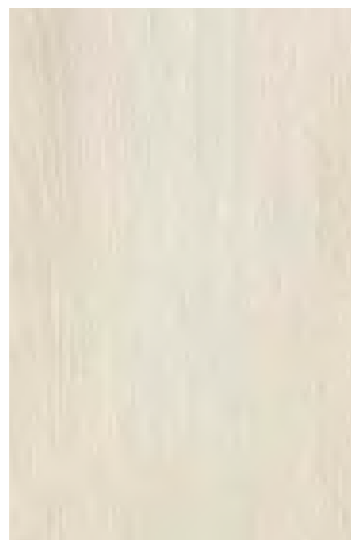
Wood



100%
WATER
RESISTANT

1 box

12 pcs
~2.7 m²



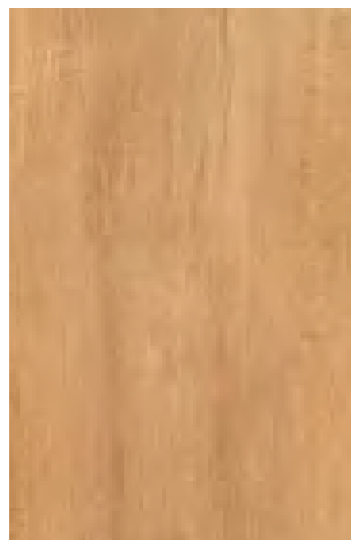
TARGARYEN | Plank/T |



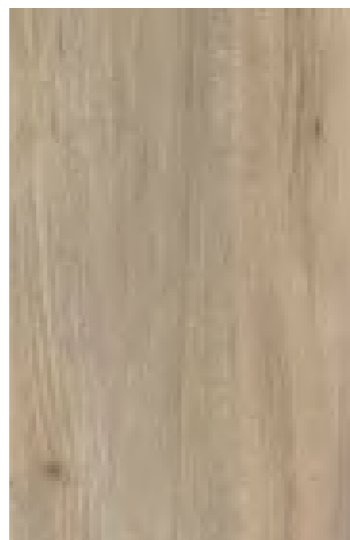
OLENA | Plank/T |



TYRION | Plank/T |



REED | Plank/T |



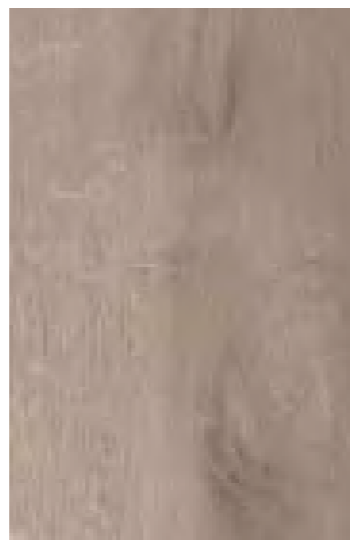
BRONN Domino 2.0 | Plank/T | Ideal



LANNISTER Domino 2.0 | Plank/T | Ideal



JOFFREY Domino 2.0 | Plank/T |



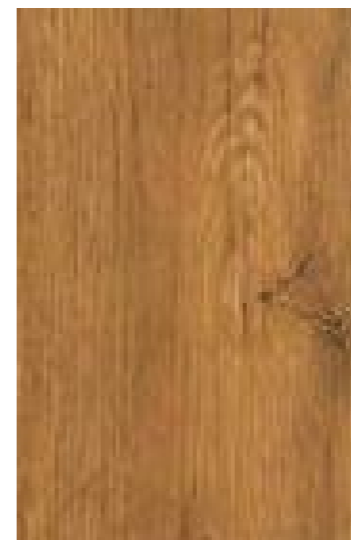
MARTELL | Plank/T |



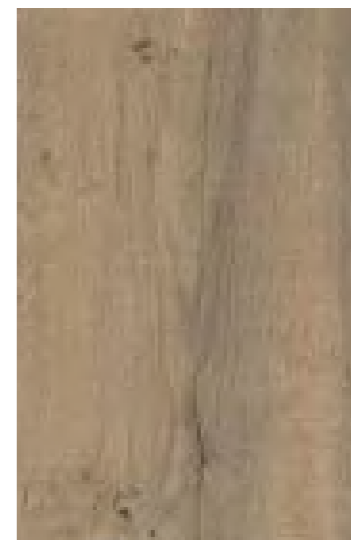
SANSa Domino 2.0 | Plank/T | Ideal



TULLY Domino 2.0 | Plank/T | Ideal



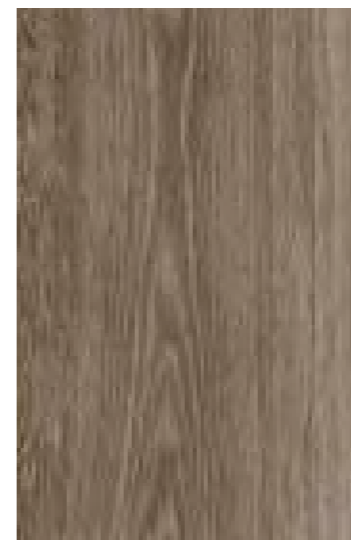
MALISTER | Plank/T |



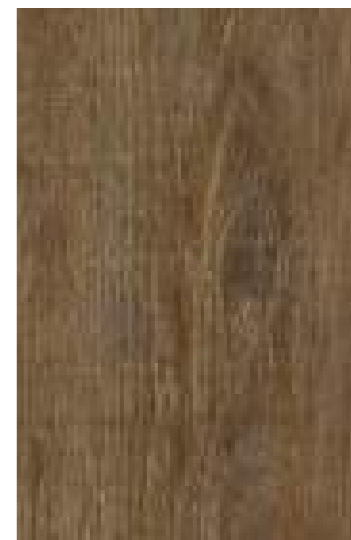
OBERYN Domino 2.0 | Plank/T | Ideal



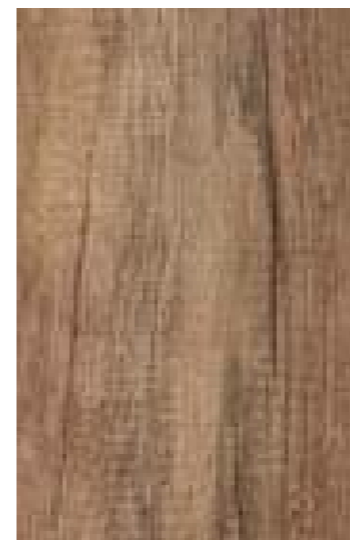
DOREAH | Plank/T |



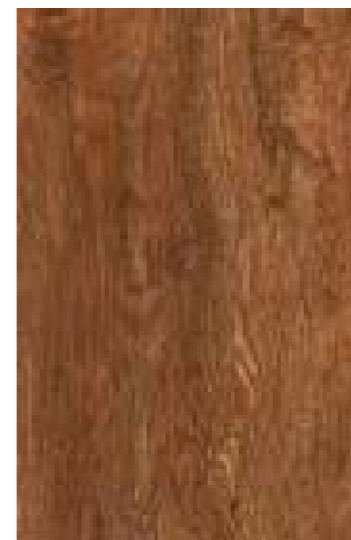
BRANDON | Plank/T |



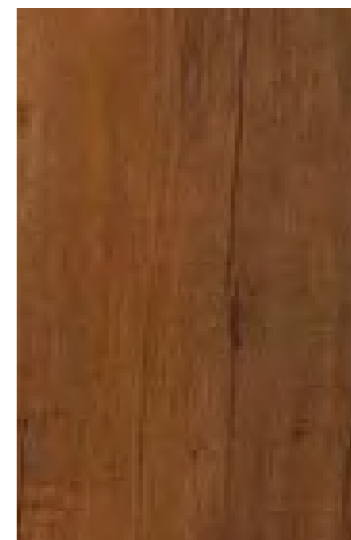
STARK | Plank/T |



DAVOS Domino 2.0 | Plank/T |



BARATHEON | Plank/T |



ELERIA Domino 2.0 | Plank/T | Ideal

LVT

Wood



100%
WATER
RESISTANT

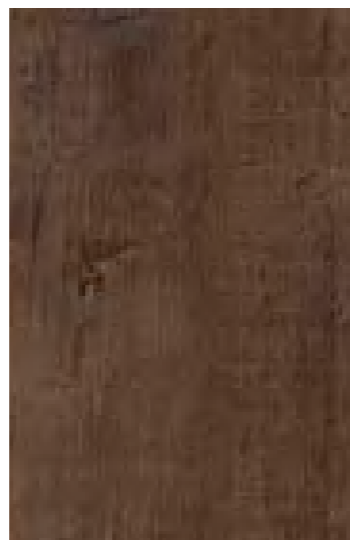
1 box

12 pcs
~2.7 m²



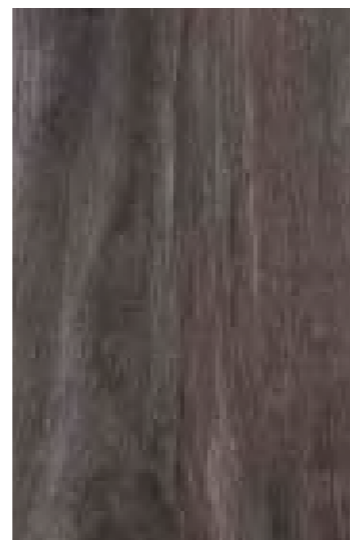
MORMONT

| Plank/T |



DROGO

| Plank/T |



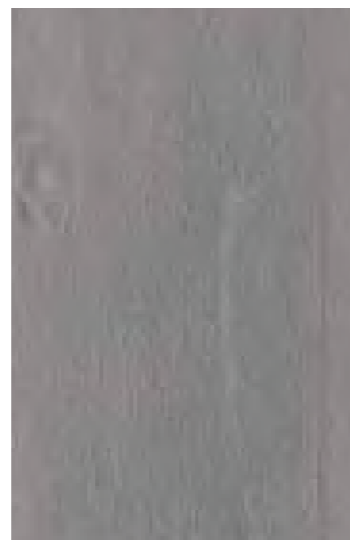
GREYJOY

| Plank/T |



MARGAERY

| Plank/T |

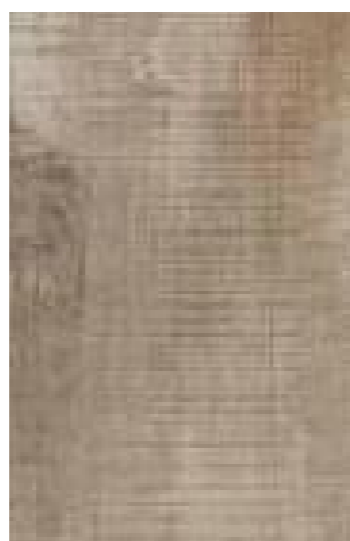


ROSLIN

| Plank/T |



BOLTON Domino 2.0 | Plank/T | Ideal



ARYA

| Plank/T |



WALDER

Domino 2.0 | Plank/T



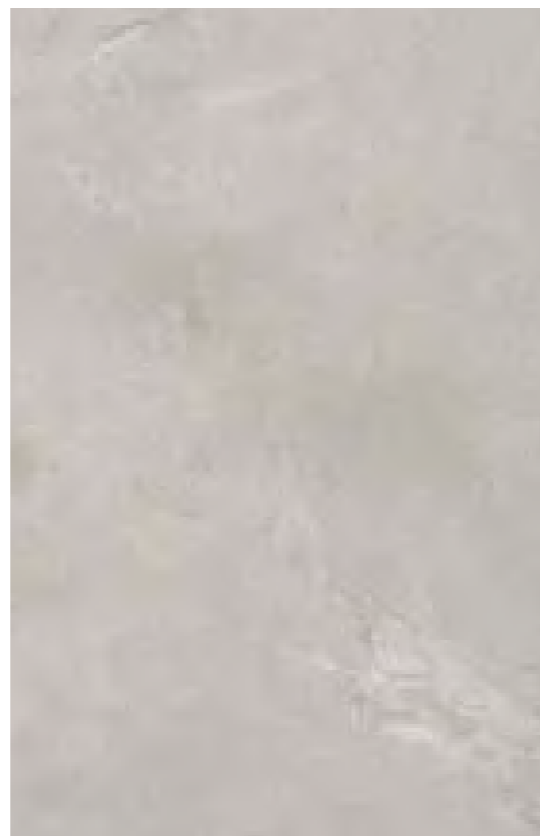
LVT

Stone



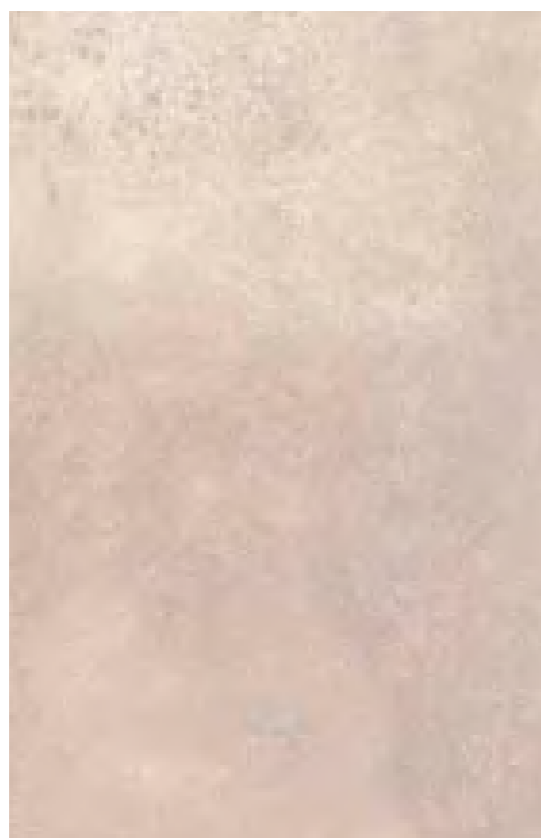
PODRICK

| Plank/T |



NYMERIA

| Plank/T |



MYRCELLA

| Plank/T |



HODOR

| Plank/T |



LVT

Stone



100%
WATER
RESISTANT

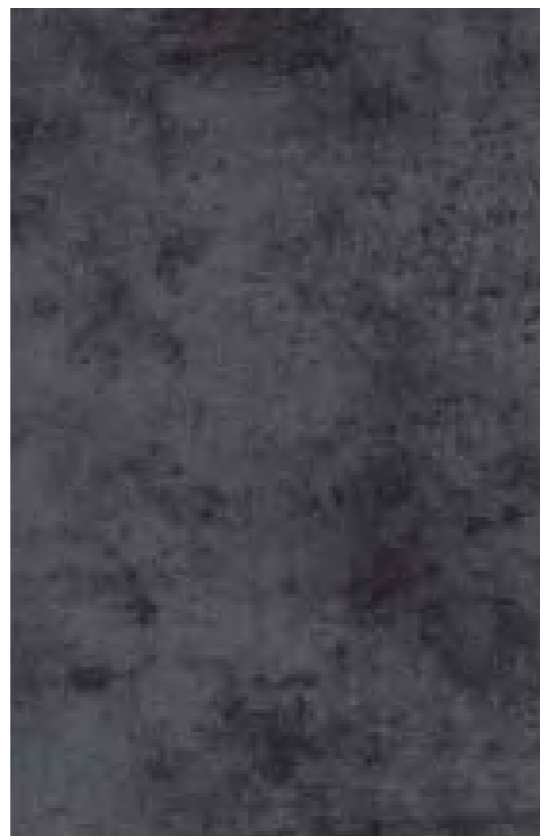
1 box

12 pcs
~2.2 m²



EURON

| Plank/T |



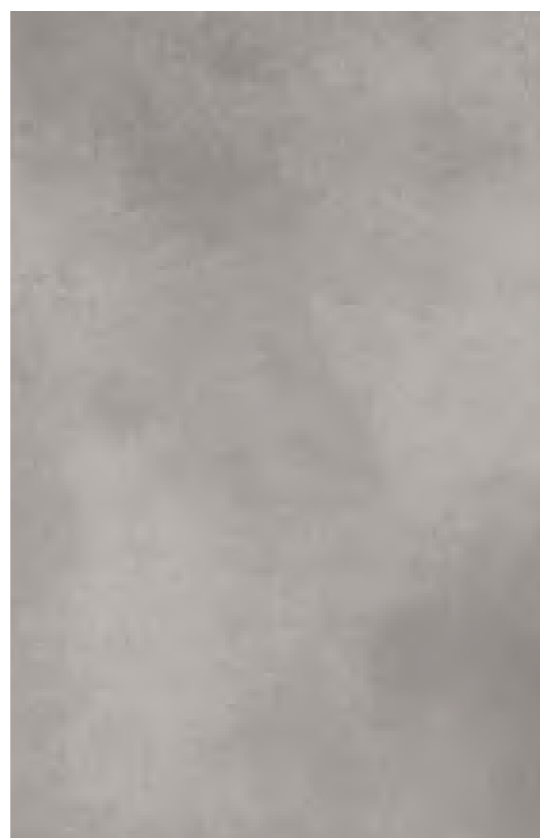
CASSEL

| Plank/T |



LUWIN

Domino 2.0 | Plank/T | Ideal



ROYCE

Domino 2.0 | Plank/T



SPC

> DOMINO SPC

> PLANK-IT SPC

SPC

DOMINO SPC | PLANK-IT SPC

THE MOST DURABLE VINYL FLOOR

PERFORMANCE, FEATURES & BENEFITS

Very simple renovation | Ideal for kids and pets | 100% waterproof | Excellent dimensional stability | Low residual indentation | Easy cleaning

RECOMMENDED USAGE

DOMINO SPC:

- > Homes
- > Semi-commercial applications

PLANK-IT SPC:

- > Hospitality
- > Retail
- > Offices



5.0
0.3
mm

DOMINO

12 pcs
~2.6 m²

1 BOX

5.0
0.55
mm

PLANK-IT

10 pcs
~2.2 m²

1 BOX

CONSTRUCTION

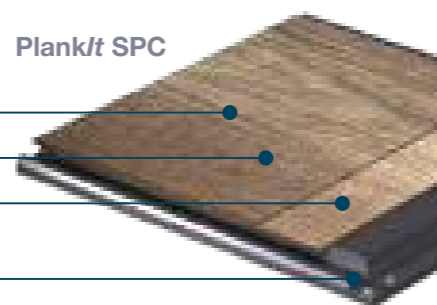
PUR Protective coating

Transparent wear layer

Design printed layer

SPC core with
Välinge 2G click system

Plank/IT SPC



Domino SPC



SPECIFICATIONS

DESCRIPTION		Plank/IT SPC	Domino SPC
Construction		SPC Luxury floor with click	
Plank size	EN ISO 24341	177.8x1219.2 mm	177.8x1219.2 mm
	EN ISO 24341	7x48 inch	7x48 inch
Total thickness	EN ISO 24346	5.0 mm	5.0 mm
Wear layer thickness	EN ISO 24340	0.55 mm	0.3 mm
Total weight	EN ISO 23997	9.9 kg/m ²	7.9 kg/m ²

CLASSIFICATION

European classification	EN 685	class: 33/42	class: 23/31
-------------------------	--------	--------------	--------------

PERFORMANCE

Abrasion group	EN 660-1	T	T
Residual indentation <small>requirement</small>	EN ISO 24343	max. 0.1 mm	max. 0.1 mm
Residual indentation <small>measured value</small>	EN ISO 24343	max. 0.01 mm	max. 0.03 mm
Dimensional stability	EN ISO 23999	max. 0.10 %	max. 0.15 %
Curling	EN ISO 23999	max. 2.0 mm	max. 2.0 mm
Fire resistance	EN 13501-1	class: Bfl-s1	class: Bfl-s1
Slip resistance	DIN 51130	R10	R10
	EN 13893	class: DS	class: DS
Impact sound reduction	EN ISO 717-2	3-4 dB	22 dB
Chemical resistance	EN ISO 26987	✓	✓
Light fastness	EN 20105 B02	grade 6	grade 6
Surface treatment		iGuard PUR Surface	
Content of PCP	EN 12673	does not contain	
Formaldehyde emission	ENV 717-1	E1 (no emission)	
VOC	ISO 16000	✓	✓
Warranty	commercial	5 year	5 year
	residential	10 year	10 year



SPC

Wood



BOLTON

Domino | Plank/T



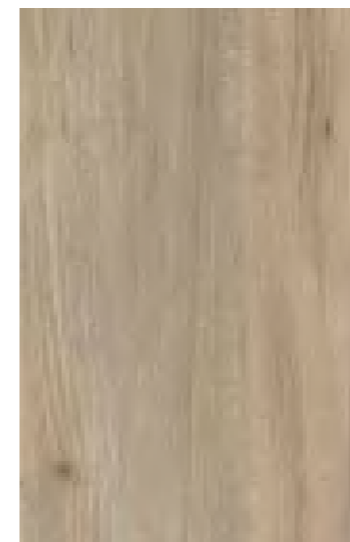
WALDER

Domino | Plank/T



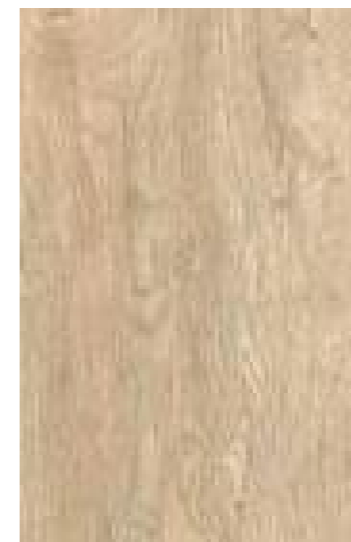
OLENA

| Domino |



BRONN

Domino | Plank/T



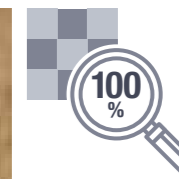
LANNISTER

Domino | Plank/T



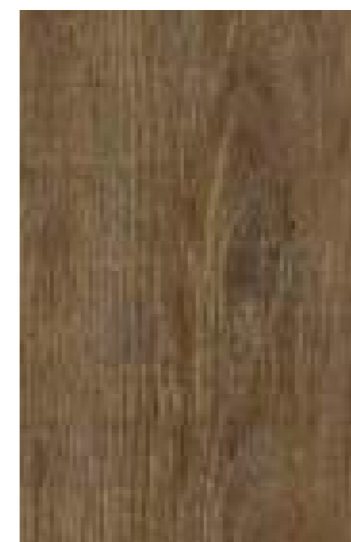
TULLY

| Domino |



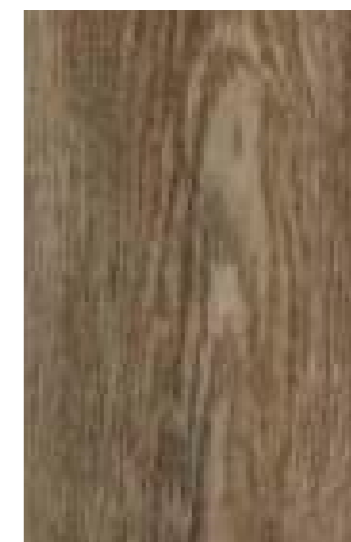
SANSA

| Domino |



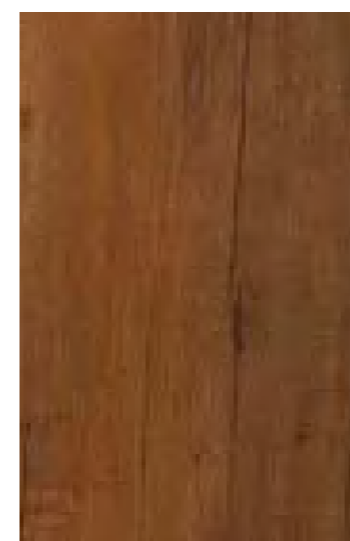
STARK

Domino | Plank/T



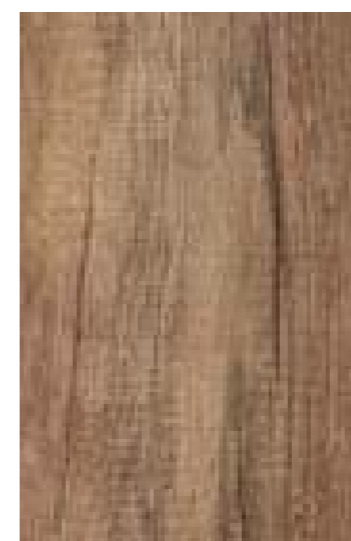
TORMUND

| Domino |



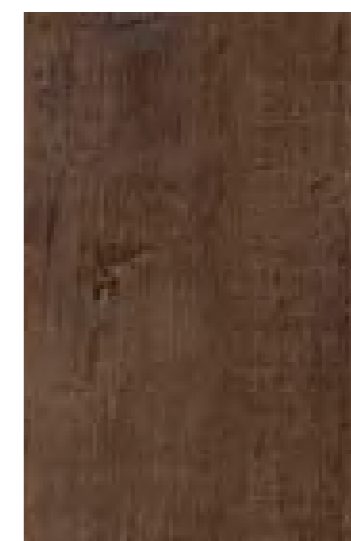
ELERIA

| Domino |



DAVOS

Domino | Plank/T



DROGO

| Domino |

Wall covering

> MURAVYL

> SILVER KNIGHT WALL



GRABO
Muravyl

HIGH PERFORMANCE FLEXIBLE WALL COVERING

RECOMMENDED
USAGE

- > Education
- > Healthcare
- > Retail
- > Hospitality
- > Offices

1.5
mm

TOTAL THICKNESS

1.4
kg/m²

TOTAL WEIGHT

2
m

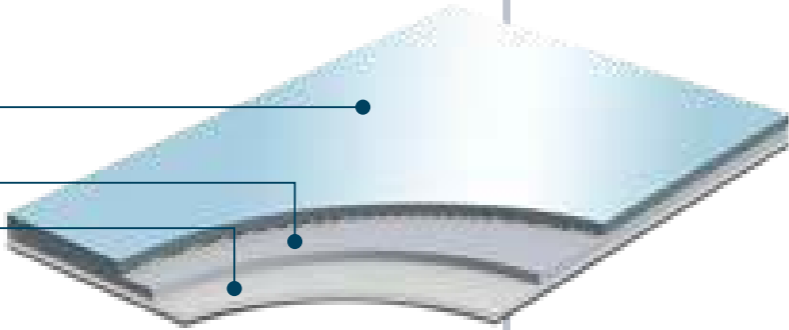
WIDTH OF ROLLS

PERFORMANCE, FEATURES & BENEFITS

2 m width | Excellent fire resistance | Dimensionally stable
Anti-bacterial | Antistatic

CONSTRUCTION

- Wear layer
- Glass fibre reinforcement
- Compact layer



SPECIFICATIONS

DESCRIPTION

Construction	compact heterogeneous	
Total thickness	EN ISO 24346	1,5 mm
Wear layer thickness	EN ISO 24340	0,5 mm
Width of roll	EN ISO 24341	2 m
Length of roll	EN ISO 24341	25 lm
Total weight	EN ISO 23997	1,4 kg/m²

CLASSIFICATION

Product specification	EN 649	✓
Residual indentation	EN 433	max. 0.1 mm
Dimensional stability	EN ISO 23999	max. 0,2 %
Light fastness	EN ISO 105-B02	grade 6

PERFORMANCE

Abrasion group	MSZ EN 660-1	T
Fire resistance	EN 13501-1	class: B-s2, d0
Chemical resistance	EN ISO 26987	✓
Anti bacterial and fungicid treatment		graboSAN
Seaming method	EN ISO846:1999	heat or cold weld



MURAVYL

GRABO

Silver Knight Wall

SELF-DISINFECTIVE FLEXIBLE WALL COVERING

RECOMMENDED USAGE

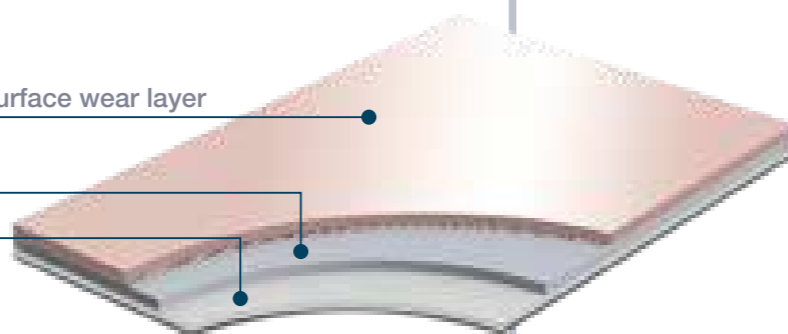
- > Education
- > Healthcare
- > Retail
- > Hospitality
- > Offices

CONSTRUCTION

Silver Knight Tech Surface wear layer

Glass fibre reinforcement

Foam backing



SPECIFICATIONS

DESCRIPTION

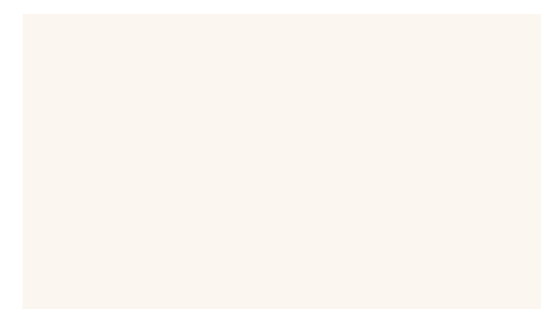
Construction	heterogeneous wall covering	
Total thickness	EN ISO 24346	1,5 mm
Wear layer thickness	EN ISO 24340	0,2 mm
Width of roll	EN ISO 24341	1,5 m
Length of roll	EN ISO 24341	25 lm
Total weight	EN ISO 23997	1,5 kg/m ²

CLASSIFICATION

Residual indentation	EN 433	max. 0.35 mm
Dimensional stability	EN ISO 23999	max. 0,2 %
Light fastness	EN ISO 105-B02	grade 6

PERFORMANCE

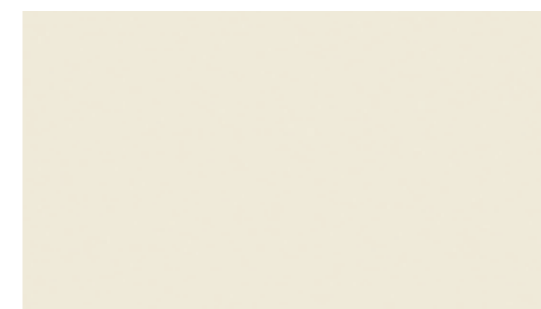
Abrasion group	MSZ EN 660-1	T
Chemical resistance	EN ISO 26987	✓
Surface treatment	TechSurface	
Anti bacterial and fungicid treatment	Silver Knight	
Seaming method	EN ISO846:1999	heat or cold weld



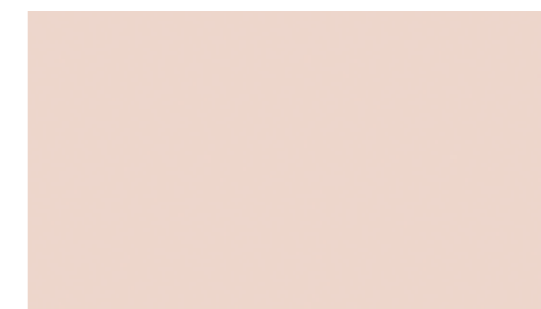
1001-275



1217-275



1137-275



2258-275



7089-275



6030-275



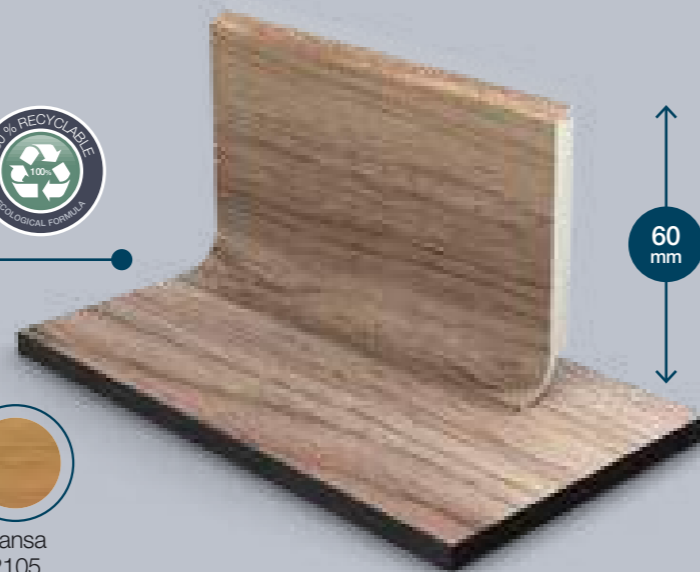
SILVER KNIGHT WALL

Grabo accessories

Edge skirting boards recommended for LVT and SPC floor coverings.

PARAMETERS:
Length: 2.2 m
Height: 60 mm
Packing: 20 pcs/box

GRABOPROFIL
HARD FOAM
SKIRTING



Available colors :



Olena 2101 Lannister 2102 Bronn 2103 Davos 2104 Sansa 2105



Eleria 2106 Tully 2107 Bolton 2108 Walder 2109 Tormund 2110 Drogo 2111 Stark 2112

PARAMETERS:
Length: 2.2 m
Height: 58 mm
Packing: 20 pcs/box

GRABOPROFIL
DESIGN
SKIRTING



Available colors :



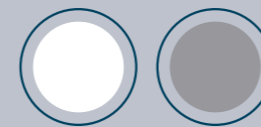
White 2201 Silver 2202 Bronze 2204 Beige 2207

PARAMETERS:
Length: 2.2 m
Width: 3 and 3.5 mm
Packing: 40 pcs/PE foil

GRABOPROFIL
CAP



Available colors
(3 mm):

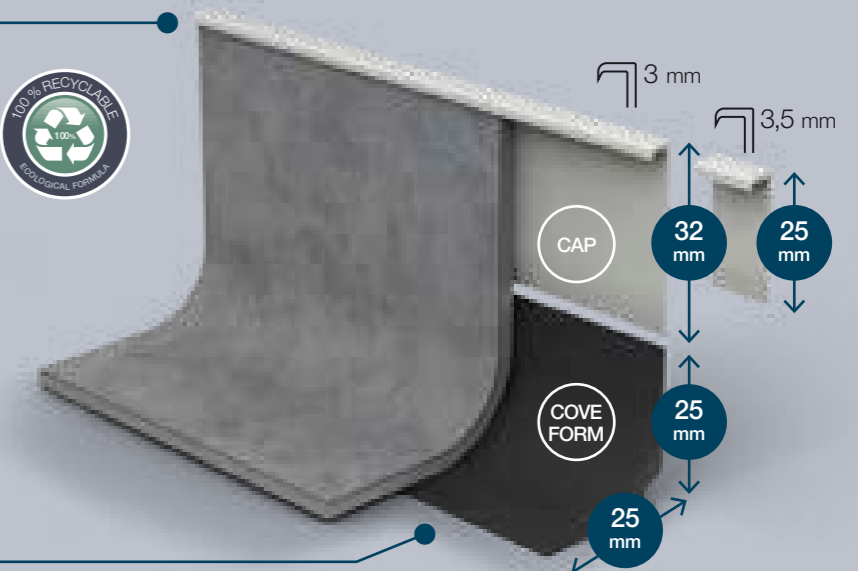


White 2501 Grey 2502

(3,5 mm):



White 2601



PARAMETERS:
Length: 2.2 m
Dimensions: 25x25 mm
Packing: 30 pcs/PE foil

Available color:

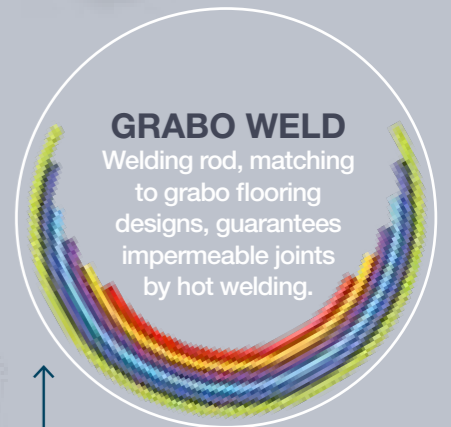


Anthracit 2305

GRABOPROFIL
COVE
FORM



GRABO WELD
Welding rod, matching to grabo flooring designs, guarantees impermeable joints by hot welding.



PARAMETERS:
Length: 2.2 m
Width: 2.5 mm
Packing: 50 pcs/PE foil

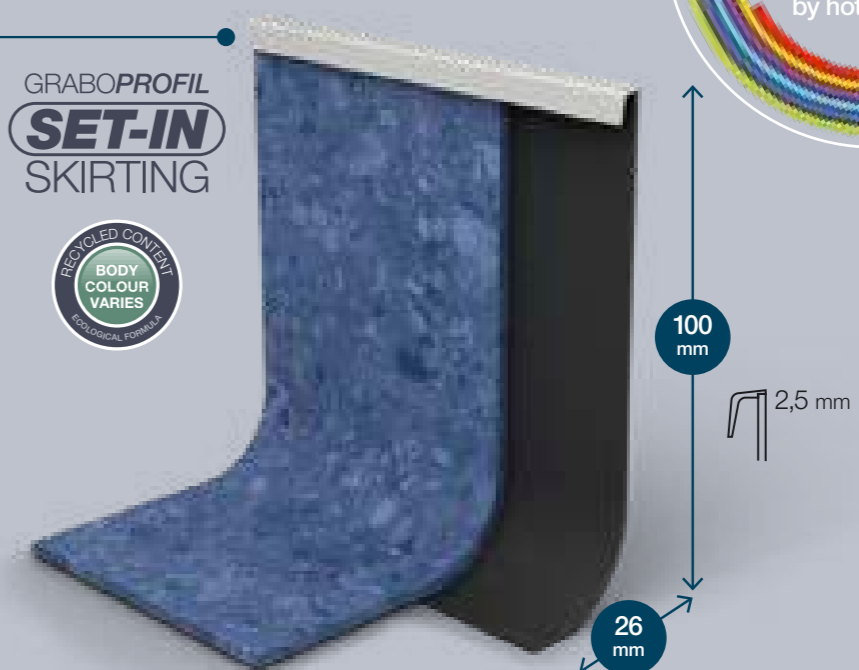
GRABOPROFIL
SET-IN
SKIRTING



Available colors :



White 2401 Grey 2402



		Homogeneous vinyl sheet floorings					Heterogeneous vinyl sheet floorings			
		Fortis	Fortis Wild	Triumph	Polis	Conducto S	Silver Knight Diamond Tech	Silver Knight Acoustic 7	Diamond	Acoustic 43
Healthcare	Entrance area									
	Reception/lobby									
	Corridors									
	Administration offices									
	Intensive care									
	Treatment rooms									
	Waiting rooms									
	Patient rooms									
	Laboratories									
	Operating theatre									
	Loundry									
	Storage rooms									
	Ramps/elevators									
	Bathroom/toilet									
	Education	Entrance area								
Corridors										
Staff rooms										
Conference rooms										
Classrooms										
Storage rooms										
Language studios										
Libraries										
Laboratories										
Multipurpose rooms/halls										
Dormitory rooms										
Dining rooms										
Bathroom/toilet										
Ramps elevators										
Offices		Entrance area								
	Reception/lobby									
	Meeting/conference rooms									
	Offices									
	Corridors									
	Bathroom/toilet									
	Canteen/cafeteria									
Retail	Entrance area									
	Department stores sales floors									
	Shops									
	Food service areas									
	Warehouses									
Hospitality	Entrance									
	Reception/lobby									
	Restaurant/bar									
	Kitchen									
	Cinema, theatre, casino									
	Corridors									
	Bedrooms									
	Bathroom/toilet									
Other public areas	Airport hall/lounge									
	Elevators									
	Bus terminals									
	Laboratories									
	Small parts assembly halls									

highly recommended
(the best flooring choices
for the space)

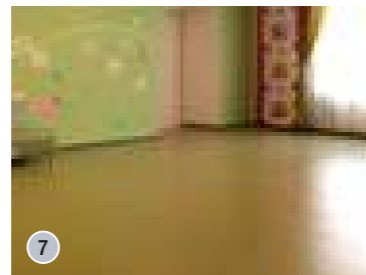
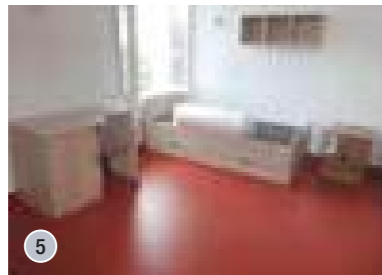
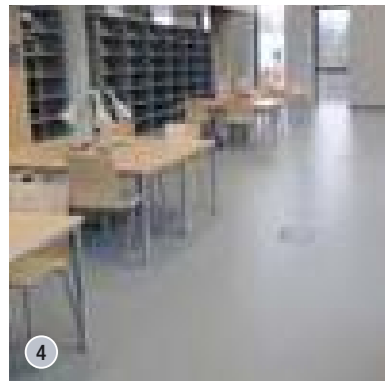
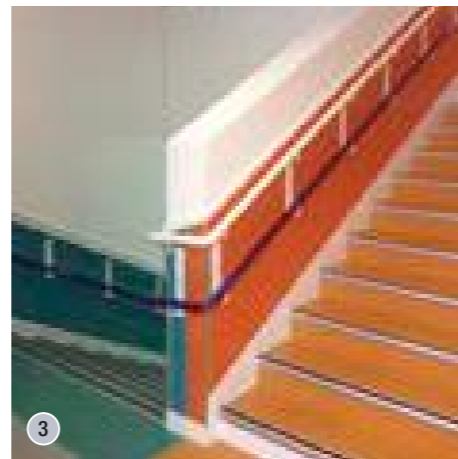
recommended
(flooring suitable for the space)

[illegible]

References

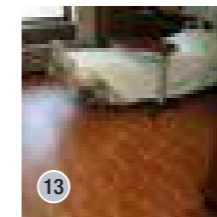
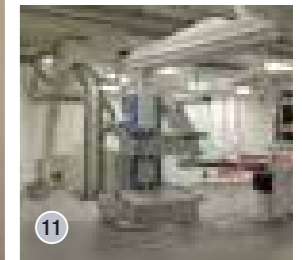
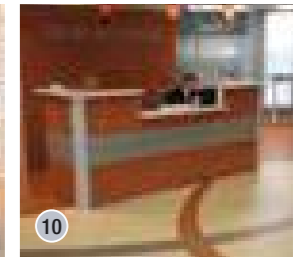
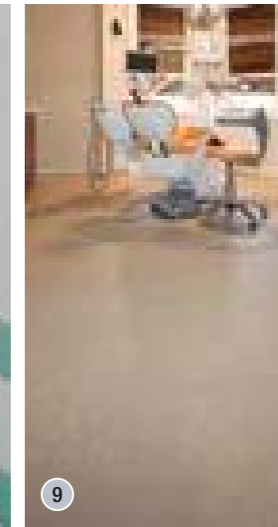
Acoustic

- 1 KG Private School, Dubai
- 2 American University Armenia-Yerevan
- 3 Rueil Malmaison School, France
- 4 Library, Zielona Gora, Poland
- 5 Hotel Eden Roc, France
- 6 Tournan en Brie School, France



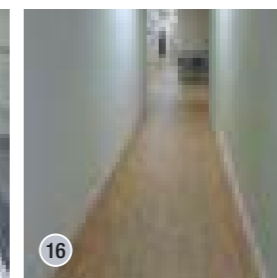
Aura

- 7 Kindergarten, Tatarstan, Russia



Silver Knight

- 8 Hospital, Nyitra, Slovakia
- 9 Dentistry, Győr, Hungary
- 10 Parkridge Medical Center, Chattanooga, USA
- 11 Ng Teng Fong General Hospital, Singapore
- 12 Ho Tung Primary School, Hong-Kong
- 13 Altru Health System's Center, Fargo, USA
- 14 Essentia Hospital, Fargo North Dakota, USA



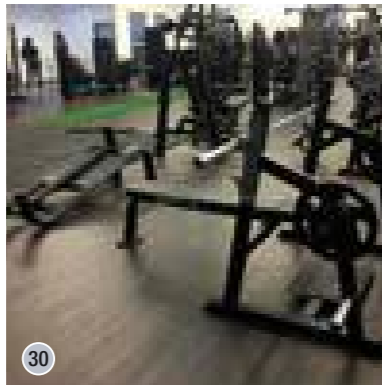
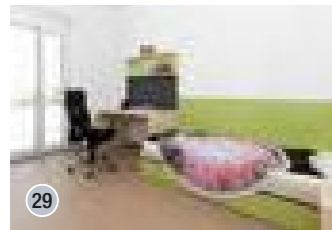
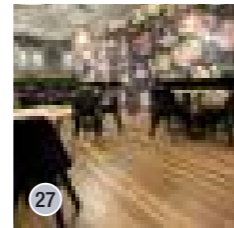
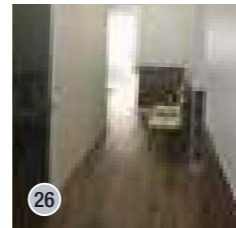
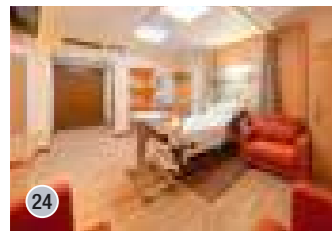
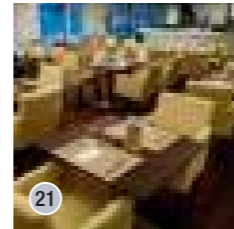
Standart

- 15 Bangkok Hospital, Thailand
- 16 VA Clinic, Sebring, Florida, USA
- 17 Natavega Mall playground, Turkey
- 18 American Culture College, Turkey

References

LVT

- 19 Kézilabda öltöző, *Veszprém, Hungary*
- 20 Patak Vendéglő, *Kismaros Hungary*
- 21 Hotel Yacht, *Siófok, Hungary*
- 22 BVH Studentenwohnheim Leechgasse *Graz, Ausztria*
- 23 Biblioteca, Escuela de Ingeniería de Antioquia, *Medellin, Colombia*
- 24 Dr.Ghassan Najib Pharaon hospital, *Jeddah, Saudi Arabia*
- 25 Puskás Aréna, *Budapest, Hungary*
- 26 Clinica do Alportel, *Portugal*
- 27 Cukrázda, *Hungary*
- 28 Campus, *Kecskemét, Hungary*
- 29 STUWO Leoben, *Ausztria*
- 30 Olhao algarve, *Portugal*
- 31 Angol iskola, *Budapest, Hungary*

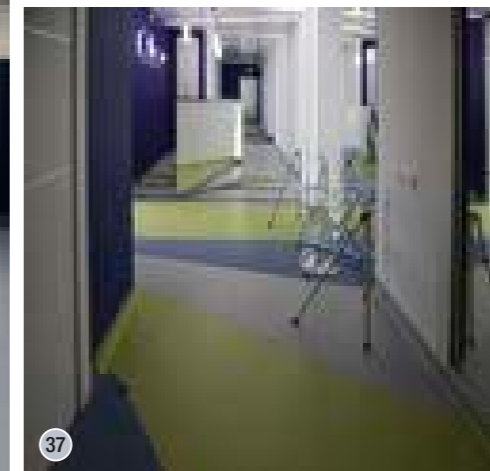
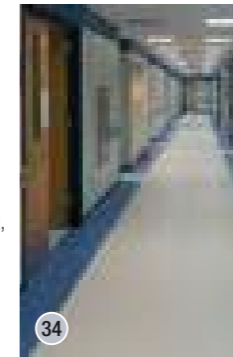
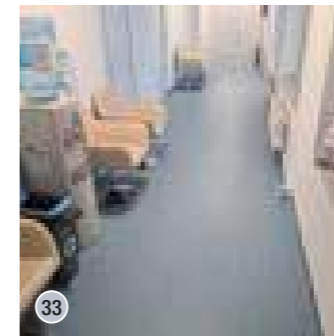


SPC

- 32 Sofia, *Bulgaria*
250 m²

Homogeneous

- 33 Clinico Braşov, *Romania*
- 34 King Faisal Specialist hospital, *Jeddah, Saudi Arabia*
- 35 Kindergarten, *Fonyód, Hungary*
- 36 Hospital Padre Carollo, *Quito, Ecuador*
- 37 Prizma Dental Clinic, *Russia*
- 38 Kindergarten, *Irpın, Ukraina*
- 39 Dr.Ghassan Najib Pharaon hospital, *Jeddah, Saudi Arabia*



Storage and care guide

The Grabo commercial vinyl floorings should be stored in the upright position or on racks in their original packaging in dry, clean and well ventilated premises. Outdoor storage under cover is not allowed. Ensure the storing temperature between +10°C and +35°C. Avoid storage in premises with high moisture content and/or condensation. The relative moisture content in the storing premises should be within 40–75%.

The GraboWeld welding rod used for heat welding should be stored under the same conditions as the flooring sheets, in its original packaging that should not be opened before use.

If stored in heated premises, the PVC products should be protected from heat. The distance between the heat source and the stored products should be at least 1 meter.

The products should be protected from direct sunlight and artificial light with high UV levels. The product should not be exposed to strain, pressure or other load during storing in order to prevent permanent deformation and cracking.

Appropriate storing conditions and adequate handling of the commercial PVC floorings will help to retain their properties till the end of their life-time. In case of extended storing (for more than one year) an adhesion test is recommended prior to the installation of the product. Only the rolls from a similar batch and having the same lot number should be used for the same premises. Prior to installation of the flooring visually inspect the sub-floor for general appearance, color and surface condition. The manufacturer does not assume responsibility for any additional labor or cost expenses resulting from evident surface defects.

INSTALLATION

SUB-FLOOR REQUIREMENTS

The contractor performing the installation of the Grabo commercial vinyl floorings must ensure the proper quality of the sub-floor. The sub-floor must be clean, smooth, permanently dry, free of cracks and any contaminants that might affect adhesion (e.g. paint, oil, grease, plaster or adhesive), sufficiently hard and resistant to pressure and tension strain. In case of concrete and sand/cement screed sub-floors, their moisture content should not exceed 2.5%. If the sub-floor moisture content exceeds 2.5%, but does not reach 5%, the damp proof membrane Grabo Vaporex should be installed underneath the PVC flooring system. If the sub-floor moisture content exceeds 5%, do not start installation before it goes below 5% or install a damp proof membrane underneath the commercial PVC flooring system.

It is recommended to check the condition of the sub-floor by performing the required tests and measurements prior to installation of the flooring. Check the surface level (using a ruler or a measuring wedge), as well as the absence of cracks, the moisture content (using a hydrometer) and the surface hardness (scratch test). Document the obtained test results. The sub-floor temperature directly before installation of the flooring should be between +15°C and +30°C.

PREPARATION OF THE SUB-FLOOR (NEW OR EXISTING BASES)

Prepare the new concrete base by stone or power grinding and vacuum cleaning. In case of new gypsum based screed sub-floors remove the loose upper gypsum layer by grinding. In case of existing carpet and rubber flooring, upon removing the old carpet or rubber sheets clean the surface from traces of paint and adhesive, then patch or fill the cracks and hollows, if any, before installing the new floor covering. If the new flooring is to be installed on top of a PVC base or ceramic tiles, thoroughly clean the surface by abrasion and vacuuming, fill the joints with a suitable repair composition and apply an approved primer compound to the entire surface.

If the new flooring is to be installed over existing wooden or laminated floors, confirm that the boards are securely fixed and properly dried. Firmly nail any loose elements to the joists and replace any boards with moisture content higher than required. The surface then should be sanded and cleaned from dust and treated with an appropriate primer compound. These sub-floor preparation and floor laying instructions assume the use of UZIN, Ceresit products which can as well be replaced by products of any other brand with similar technical properties.

For the pre-treatment of absorbent surfaces use dispersion primer e.g., UZIN PE 360; Ceresit R 777; apply the primer with nylon fiber roller and leave it to dry. Use primer UZIN PE 280; Ceresit R 766 to hard, dense, non-absorbent surfaces. The primer

will trap the remaining dust, close the pores in the concrete and make a contact surface for the smoothing compound. After the primer has been completely absorbed, the surface needs to be leveled using a suitable smoothing compound (e.g. self-leveling compound UZIN; Ceresit). When choosing the self-leveling compound, consider the expected traffic load and the time allotted for the installation of the flooring. Thoroughly mix the powder with water according to manufacturer's instructions and then spread the smooth paste on the surface with a flat trowel. Occasional air bubbles should be removed with the help of a spiked roller. After the surface has completely dried up, it should be smooth-finished and cleaned from dust.

The Grabo commercial vinyl floorings are compatible with underfloor heating. If underfloor heating is used on the site, the heating system must be switched on at least four weeks before installation of the new flooring. Switch off the underfloor heating 24 hours before commencement of work and keep it turned off till installation of the PVC flooring has been completed. Wait 48 hours after the flooring has been installed and then switch on the heating again. Raise the temperature steadily till it reaches its usual value over approximately 5 days. While using underfloor heating, the temperature of the sub-floor must not exceed 28°C.

INSTALLATION OF GRABO COMMERCIAL VINYL FLOORINGS

While the measured sub-floor moisture content stays within 2.5–5CM%, the use of damp proof membrane Grabo Vaporex is mandatory. If the measured subfloor moisture content is below 2.5%, the use of damp proof membrane Grabo Vaporex with Grabo commercial vinyl floorings can be waived. The use of Grabo Vaporex underlay is advisable in the case of existing concrete bases, vinyl floorings and metal bases and mandatory for asphalt sub-floors.

Installation of Grabo Commercial Vinyl Floorings with Grabo Vaporex:

The underlay must be unrolled and tempered on the site at a temperature of at least 18 °C for one day prior to installation. The Grabo Vaporex underlay should be placed on the even, dry and clean sub-floor prepared according to instructions, with the pattern side facing down. Fold up the edges near the walls for at least 10 centimeters and trim accordingly. Adjust the underlay sheets edge-to edge and then fasten the edges on the top (of the plain side) with a 5 cm wide vinyl adhesive tape. The underlay should lie flat on the surface. While Grabo Vaporex can be laid both lengthwise and crosswise, the crosswise installation is advised. Make sure the underlay joints do not fall together with the seams between the flooring sheets installed on top of the underlay. The Grabo commercial vinyl floorings should be glued to the underlay using a dispersion contact adhesive (e.g. Thomsit K 188E). Spread the adhesive evenly on the underlay surface using an A4 notched trowel, maintaining the spread rate of approximately 200 g/m2. Leave the adhesive to evaporate completely till it changes from opaque to transparent yellow. After approximately 60–90 minutes test it with your finger, and if not anymore tacky, the adhesive bed is ready to accept the flooring sheets. Further steps (e.g. welding) are the same as described below for the installation of Grabo commercial vinyl floorings without Grabo Vaporex underlay.

INSTALLATION OF GRABO COMMERCIAL VINYL FLOORINGS WITHOUT GRABO VAPOREX:

The flooring must be unrolled and tempered on the site at a temperature of at least 18°C for one day prior to installation. Use the flooring rolls from a similar batch and having the same lot number for installation in the same premises. It is advisable to open the rolls in the ascending order of their lot numbers. When laying the flooring with a wood imitating pattern the subsequent strips should point in the same direction, otherwise lay every next strip with the pattern pointing in the reverse direction compared to the previous row. The arrow on the back side of the roll shows the correct laying direction. After tempering the unrolled floor covering trim the sheets to size on both ends with a 5 cm allowance, then place them on the sub-floor and align precisely edge-to edge. The rolls should be installed lengthwise, following the direction of the sunlight as it falls on the floor. Fold back the flooring strips to half of their length before applying the adhesive.

GLUING

We recommend using solvent-free low emission dispersion adhesives with Grabo commercial vinyl floorings. Two adhering methods can be advised – based on wet set adhesives and contact adhesives.

WET GLUING

In case of hygroscopic sub-floors (concrete, sand/cement screed) the use of dispersion or emulsion acrylic adhesive is recommended. The adhesive should be stored in frost-free environment and tempered on the site at a temperature of at least 18°C for one day prior to installation. Stir up the adhesive thoroughly before use. Recommended adhesives: Uzin KE 418; UZIN KE 2000Si; Ceresit UK 400; Ceresit K188E; Mapei Ultra/ Bond ECO 380, F-Ball F/44.

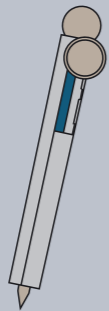
Spread the adhesive on the sub-floor using an A3 or a B1 notched trowel, maintaining the spread rate of approximately 300–400 g/m2. Be sure to check the condition of the notched strips regularly and re-cut as necessary. Always follow the adhesive manufacturer's instructions regarding the optimal quantity, the open time and the drying time of the adhesive. A shorter open time will lead to the appearance of air bubbles, whereas a longer open time will reduce the bonding capacity.

CONTACT GLUING

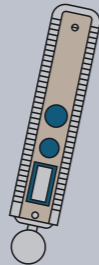
The use of contact adhesives can be recommended for both hygroscopic sub-floors (concrete, sand/cement screed) and impervious (PVC) substrates. Only contact adhesives should be used for impervious sub-floors. Recommended adhesive: UZIN KE 2000Si; Ceresit K 188E, which is a solvent-free dispersion adhesive suitable for contact application. Apply the adhesive to the sub-floor and spread evenly using an A2 or A4 trowel and maintaining the spread rate of approximately 200–250 g/m2. Leave the adhesive to evaporate completely till it changes color from opaque to transparent yellow. After approximately 60–90 minutes test it with your finger, and if the adhesive is not tacky anymore, you can start the laying.

Tools and equipments

SUB-FLOOR PREPARATION



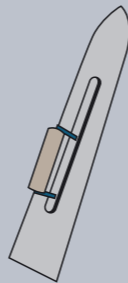
Sub-floor hardness tester



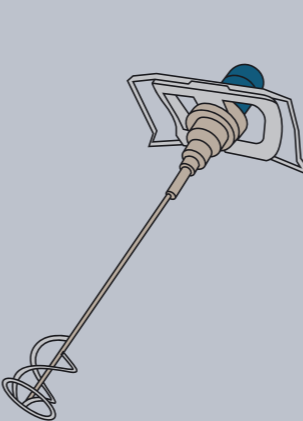
Equipment for structural moisture analysis (Hydromat CM-B or HB30)



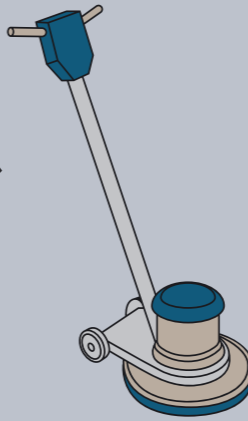
Equipment for measuring temperature and relative humidity (Digital Thermo-Hygrometer LVT10)



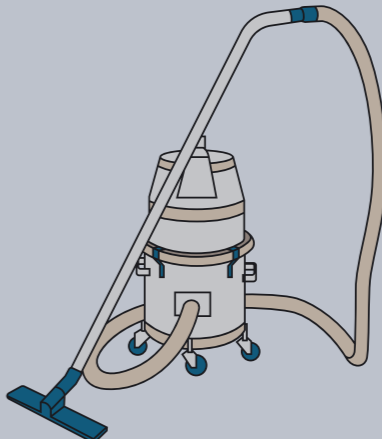
Flat trowel



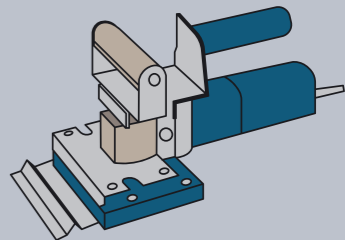
Hand mixer CX10 with suitable mixing blades



Rotary single disc polisher Columbus with accessories



Industrial vacuum cleaner Janvac 1600



Tools for stripping the existing floor covering (Compact stripper, Cosmo stripper)

IN CASE OF VINYL SHEET FLOOR COVERINGS

Start to position the folded back flooring sheet onto the adhesive bed. To ensure good bonding, thoroughly smooth the flooring sheet, working from the center outwards, with the help of a manual cork rubber, confirming no air bubbles are trapped underneath. Finally roll the installed flooring using a 50–60 kg roller. Repeat the sequence to install the other half of the flooring sheet. In order to make site formed coved skirting, draw a line on the wall to mark the height the coving will reach and fit the capping strip to the wall using contact adhesive. Attach the cove former in a similar way: using a brush, apply contact adhesive to the back of the cove former and to the wall up to the capping strip and leave both to dry. When completely dry, firmly push the vinyl with the cove former into place and tuck the top edge into the capping strip.

IN CASE OF LVT

LVT planks are to be installed generally parallel to the main light source, usually this is the longer side. Carefully determine where to begin tile or plank installation. It is customary to centre rooms and hallways so borders are not less than half a tile or plank. In hallways and small places it is simpler to work lengthwise from one end using a centre reference line. Make sure cut edges are always against the wall.

In case of simple surface pattern, measure the size of the room and mark the straight starting line of the installation. The distance of the starting line from the deepest part of the wall should be minimum the width of the plank minus 2-3 cm, or multiple of the width of the plank minus 2-3 cm. Coat the adhesive on the subfloor with the spatula, coated surface should be max. 3-4 rows at the same time and wait until the adhesive will be dry. Make finger test! Follow always the instructions of the glue manufacturer. LVT should be installed by offsetting method. Starting on the starting line, place the LVT pieces side by side, glue them on the subfloor, and closely fit the edges of the planks to each other. If the last piece of LVT is longer then needed, mark and cut the plank installing the cut end next to the wall. The remainder of the LVT which has been cut off can be used to start the next row as long as it is minimum 20 cm. If the last piece in the row is a full plank, start the next row with a cut piece which has minimum 20 cm length, ideal case is to make half cut piece. Against the wall install cut edge piece. Place each LVT piece tight, against the adjoining element, and well embed in the adhesive. The next rows can be started with the pieces cut from the previous rows, minimum size of these pieces are 20 cm. After gluing roll down well the planks with a steel roller as well (weight 50-70 kg) in all directions, forward and back and diagonally. Prepare the skirting at the walls. Skirting can be made from the same LVT plank or from other plastic or metallic skirting, which is in harmony with the design of LVT. Use silicone seals between the joints of LVT and skirting.

WELDING

Welding (in case of sheet vinyl floor coverings) can be performed after no less than 24–48 hours upon installation, depending on the kind of the applied adhesive and the adhesive manufacturer's instructions.

HEAT WELDING

Application of heat welding is mandatory for wet areas and premises with underfloor heating. When the flooring is ready, the joints should be grooved to appropriate depth and width either manually, or with a power tool. For foam backed vinyl floorings the joints should be grooved to the depth of the upper (outer) layer; for firm dense surfaces the joints should be grooved to the 2/3 of the profile; the recommended groove width is 2–3 mm. The joints should be thoroughly cleaned from any debris. Use ø 4 mm GraboWeld welding rod for heat welding of the commercial vinyl floorings. Set the working temperature of the heat welding gun to approximately 300–400 C°. The welding can be carried out with the help of an automatic appliance or with a hand-operated welding set. Before starting the procedure, trial welding is recommended in order to set the optimal welding temperature and speed. After the welding seam has cooled down, remove the excessive welding rod in two steps. First cut off the top half of the welding rod using a quarter moon knife. After the remaining weld has cooled to the room temperature, perform the final trim.

HEAT WELDING IN THE CORNERS

From the perspective of the flooring external and internal corners are distinguished. Fitting of welds in internal corners can be performed in two ways: either by precision cutting and subsequent silicon filling of the seam, or by „half-rod” welding. In the latter case, the welding rod cut-offs from the first trim can be used to fill in the vertical seams by pressing them into the vertical grooves with the rounded side down and then applying heat coagulation to the joints. The excess welding rod should be trimmed off. It is recommended to pre-heat the coves before welding the joints. Precision cutting is important for external corners as well. Corner welding should be performed with a welding rod.

COLD WELDING

Cold welding is another common technique used for the installation of commercial PVC floorings. This method ensures quick seam closing and is especially suitable for chip floors and all-over surfaces, as it produces an integral seamless covering for large areas. The cold welding technique consists of four steps:

1. Place the PVC flooring strips so as they overlap for approximately 3–5 cm. Cut the sheets lengthwise along a metal rule and remove the cut-off waste from both the top and the bottom layer.

2. Center the masking paper tape over the closely cut joints of the PVC strips and press it on tightly with a roller to stop the cold welding paste from sneaking while being filled into the joint.
3. Cut through the masking tape simply and firmly along the seam with a circular cutter (or a trapezoid blade).
4. Thoroughly shake up the tube with the cold welding paste. Press the nozzle of the cold welding paste tube deeply into the joint with one hand and pull the tube along the joint. Use your other hand to dose the cold welding paste so that an approximately 5 mm wide line appears on the surface of the masking tape. Allow bonding for ten minutes and then remove the masking tape. The result is an almost invisible waterproof seam.

Use Werner Mueller cold welding paste Type A for sealing new PVC floorings and Type C to repair the existing surfaces. Successful cold welding requires the use of the tools and equipment shown in the picture. For details of cold welding technique see your language version of the manufacturer's site: www.mueller-pvc-naht.de

SKIRTING

Flash coving is an extension of the sheet flooring up the wall to form a wall base. This can be accomplished by either one-piece flash coving, border flash coving, or two-piece flash coving. All seams in the flash cove area should be treated the same as seams throughout the rest of the installation. Grabo flooring accessories are manufactured under strict quality control from a blend of quality raw materials. To achieve best finish to your flooring we recommend to use our following profiles **GraboProfil Set-In Skirting** 100mm • **GraboProfil Cove Form** 25x25mm **GraboProfil Set-In Skirting** 100mm • **GraboProfil Cap** 3mm

INSTALLATION GUIDE TO GRABO MURAVYL WALL COVERING

The wall surface will be covered by Grabo wall coverings should be clean, dry and dust free. The old wallpaper, old wall covering and old paint should be removed. The holes and hollows should be filled up with gypsum and the unevenness should be diminished. After the gypsum dried out, the surface should be abraded with fine sandpaper and made dust free. The surface should be treated with deep primer, e.g. Henkel "METYLAN". When installing the wall covering, the ideal room temperature is about 18-25°C and the relative humidity is around 50-60%. The installation can be started when the prepared wall (as above) is absolutely dry. The recommended glue type is Henkel Thomsit K 188 E and Uzin KE 2000S or other water based pressure sensitive glue, which has equivalent properties to these brands. The wall covering should be cut in advance into the required length 24 hours before gluing. We recommend installing the wall coverings on the following way: The wall covering can be installed vertically or horizontally as well. The glue should be applied with spatula A2 teeth onto the wall. (Consumption of glue is approx. 250-300gr/m²) Before putting on the wall covering, you should make so called finger-press test on the glue. When no any particle of glue remains on your finger it is the right time to put the covering on the wall. Always follow the instructions of the manufacturer of the glue, keep waiting time according to the description. Put the wall covering cut to size beside each other so that the rolls cover/lap each other in a 2-3 cm wide stripe. The hanging should be made with the help of the special brush, smoothing roller, rubber roller. The smoothing always should start from up to down direction and from the middle toward the edges. The air bubbles should be perfectly and carefully smoothed out from under the wall covering. After this you should cut the middle of the lapped 2-3 cm stripe (where the wall stripes meet) with a very sharp knife and with the help of a steel ruler. The cutting should be carried out on that way that the knife should cut both layers. Then the edges of the wall covering slightly should be raised so that the narrow stripes could

be peeled off. This process should be made very carefully and slowly, so that there must be only 1 cut stripe. Then we smooth down again the edges (from up to down), and remove the residues of the glue if there is any, with a soft, wet sponge immediately. Should there glue residues remain on the surface of the wall covering you should remove it immediately by a wet, soft sponge.

We recommend cold welding or hot welding process to make the joints waterproof. Welding process can be started 24 hours after gluing.

CLEANING AND MAINTENANCE

GENERAL NOTES

Regular cleaning and maintenance are crucial for the durability and attractive appearance of your flooring. The floor maintenance schedule is primarily determined by the intensity of the traffic load. Routine (daily) cleaning and periodical general maintenance are indispensable for preservation of the long-term appearance and performance of Grabo floor coverings. Apart from the approved maintenance products listed in this guide, other cleansers with similar parameters (chemical formulation and pH-value) are also compatible for use with Grabo commercial vinyl floorings. Do not use cleaning products that could damage the surface, e.g. abrasive cleaners or organic solvent-based detergents. As a general rule, always follow the detergent manufacturers' instructions and contact them for additional details when required. Cleaning and maintenance procedures for Grabo safety floorings are described in a separate user guide.

PREVENTIVE MEASURES

Most of the dirt, grit and moisture that will need to be cleaned from the floor surface arrive from the street. The majority of this soiling can be kept outside by using efficient dirt barrier systems of appropriate size. The maintenance regime depends to a great extent on how efficiently the dirt is stopped at the front door. Another point to consider is the use of high-quality heavy-duty plastic pads ("footies") to be attached to furniture legs to protect the floor from scratching. The newly installed floor covering needs a basic cleaning that should be later repeated between certain periods of use.

BASIC AND PERIODICAL CLEANING BY MACHINE

Remove solid dirt from the surface by sweeping or vacuum-cleaning. Tools: alkaline cleaning detergent, mono-disc cleaning machine with red pad and damp sweeping equipment.

TECHNOLOGY OF BASIC/PERIODICAL CLEANING

The cleaning solution should be dispersed on a surface of 5-10 m2 area and should be scrubbed after an acting time of 10-15 minutes. Then the cleaning agent should be absorbed, the surface should be rinsed with clean water, and lastly, the water should be absorbed again. The periodical cleaning should be done with a frequency according to the grade of use.

DAILY CLEANING

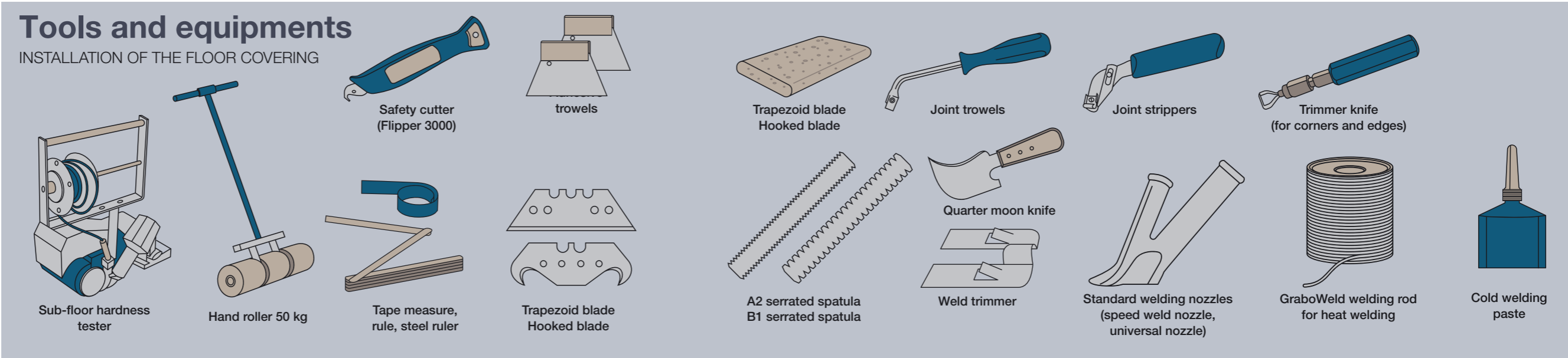
Remove solid dirt from the surface by sweeping or vacuum-cleaning then make wet cleaning manually or with a mono-disc machine with white pad.

MANUAL WET CLEANING:

Tools: mop, (microfiber mop is the best), damp sweeping equipment, cleaning agent (generally neutral or light alkaline detergent) Cleaning should be performed with the two-bucket method.

MECHANICAL WET CLEANING:

For daily mechanical cleaning use mono-disc cleaning machine with white pad. Use neutral or light alkaline cleaning agent. Never use abrasive products and any material that risks damaging of the surface. Never use rubber caps on furniture legs in order to avoid discoloration of the floor covering.



COMMERCIAL



GRABO Commercial

VINYL FLOORINGS AND WALL COVERINGS

2021|01



GRABOPLAST

Floor Covering Manufacturers Ltd.

H-9023 Győr, Fehérvári út. 16/b. Telefon: (+36) 96 506-100

www.graboplast.com



www.facebook.com/graboplast

